

Please read and save these instructions. Read through this owner's manual carefully before using product. Protect yourself and others by observing all safety information, warnings, and cautions. Failure to comply with instructions could result in personal injury and/or damage to product or property. Please retain instructions for future reference.

**GreatNeck®**

## ROTARY TOOL

### UNPACKING


After unpacking unit, inspect carefully for any damage that may have occurred during transit. Check for loose, missing, or damaged parts. If any damage is observed, a shipping damage claim must be filed with carrier. Do not use the GreatNeck® Rotary Tool if broken, bent, cracked or damaged parts (including labels) are noted. Any Rotary Tool that appears damaged in any way, operates abnormally or is missing parts should be removed from service immediately. If you suspect that the Rotary Tool was subjected to shock load (a load that was dropped suddenly, unexpectedly, etc.) immediately discontinue use until it has been checked by a factory authorized service center.




### WARNING

The following safety information is provided as a guideline to help you operate your Rotary Tool under the safest possible conditions. Any tool or piece of equipment can be potentially dangerous to use when safety or safe handling instructions are not known or not followed. The following safety instructions are to provide the user with the information necessary for safe use and operation. Please read and retain these instructions for the continued safe use of your tool. Failure to follow instructions listed below may result in serious injury. In addition, make certain that anyone that uses the equipment understands and follows these safety instructions as well.

### Explanation of Safety Signal Words

 **WARNING:** Indicates a potentially hazardous situation which, if not avoided, could result in death or serious injury.

 **CAUTION:** Indicates a potentially hazardous situation which, if not avoided, may result in minor or moderate injury.

**CAUTION:** Used without the safety alert symbol indicates a potentially hazardous situation which, if not avoided, may result in property damage.

**NOTES:** Provide clarity and helpful information.

**GreatNeck®**

## ROTARY TOOL

Thank you very much for choosing a GreatNeck Product!

For future reference, please complete the owner's record below:

**Model:** \_\_\_\_\_ **Purchase Date:** \_\_\_\_\_

Save the receipt, warranty and these instructions. It is important that you read the entire manual to become familiar with this product before you begin using it. This tool is designed for certain applications only. GreatNeck cannot be responsible for issues arising from modification. We strongly recommend this tool is not modified and/or used for any application other than that for which it was designed. If you have any questions relative to a particular application, DO NOT use the tool until you have first contacted customer service to determine if it can or should be performed on the product.



### IMPORTANT INSTRUCTIONS AND SAFETY RULES

1. Know your tool. Read this manual carefully. Learn the tool's applications and limitations, as well as, potential hazards specific to it.
2. Keep work area clean and well lit. Cluttered or dark work areas invite accidents.
3. Keep children away. All children should be kept away from the work area. Never let a child handle a tool without strict adult supervision.
4. Do not operate this tool if under the influence of alcohol or drugs. Read warning labels on prescriptions to determine if your judgment or reflexes are impaired while taking drugs. If there is any doubt, do not attempt to operate.
5. Use safety equipment. Eye protection should be worn at all times when operating this tool. Use ANSI approved safety glasses. Everyday eyeglasses are NOT safety glasses. Dust mask, non-skid safety shoes, hard hat or hearing protection should be used in appropriate conditions.
6. Wear proper apparel. Loose clothing, gloves, neckties, rings, bracelets or other jewelry may present a potential hazard when operating this tool. Keep all apparel clear of the tool.
7. Don't overreach. Keep proper footing and balance at all times when operating this tool.
8. Check for damage. Check your tool regularly. If part of the tool is damaged it should be carefully inspected to make sure that it can perform its intended function correctly. If in doubt, the part should be repaired. Refer all servicing to a qualified technician. Consult your dealer for advice.
9. Keep away from flammables. Do not attempt to operate this tool near flammable materials or combustibles. Failure to comply may cause serious injury or death.
10. Store idle tools out of the reach of children and untrained persons. Tools may be dangerous in the hands of untrained users.
11. Maintain tools with care.
12. Keep tools dry and clean.
13. Do not use a damaged tool. Tag damaged tools "Do not use" until repaired.
14. Use only accessories that are recommended by the manufacturer for your model. Accessories that may be suitable for one tool may become hazardous when used on another tool.
15. Tool service must be performed only by qualified repair personnel. Service or maintenance performed by unqualified personnel could result in a risk of injury.
16. When servicing a tool, use only identical replacement parts. Use of unauthorized parts or failure to follow maintenance instructions may create a risk of injury.
17. Maintain a safe working environment. Keep the work area well lit. Make sure there is adequate surrounding workspace. Keep the work area free of obstructions, grease, oil, trash, and other debris. Do not use this product in a damp or wet location.
18. Maintain labels and nameplates on this product. These carry important information. If unreadable or missing, contact customer service for a replacement.
19. Before use, read and understand all warnings, safety precautions, and instructions as outlined in the vehicle manufacturer's service manual. It is beyond the scope of this manual to properly describe the correct procedure and test data for each vehicle.
20. Always perform vehicle service in a properly ventilated area. Never run an engine without proper ventilation for its exhaust. Stop work and take necessary steps to improve ventilation in the work area if you develop momentary eye, nose, or throat irritation as this indicates inadequate ventilation.





# GreatNeck®

## ROTARY TOOL

### ⚠ WARNING

- Disconnect the plug from the power source before making any adjustments, changing accessories or storing the tool.
- To avoid electrical hazards, fire hazards or damage to the rotary tool, use proper circuit protection.
- Do not abuse the cord. Never use the cord to carry the tools or pull the plug from an outlet. Keep cord away from heat, oil, sharp edges or moving parts. Replace damaged cords immediately.

**NOTE:** The manufacturer declines any and all responsibility for damage to vehicles or components if said damage is the result of unskillful handling by the operator or of failure to observe the basic safety rules set forth in the instruction manual.

### ⚠ WARNING

Read Rules for Safe Operation and Instructions Carefully.

### Important Safety Instructions

The warnings, precautions, and instructions discussed in this manual cannot cover all possible conditions and situations that may occur. The operator must understand that common sense and caution are factors which cannot be built into this product, but must be supplied by the operator.

### ⚠ WARNING

1. Use only accessories recommended or sold by manufacturer. Use of non-recommended accessories may result in fire, electric shock or injury.
2. Do not disassemble the Rotary Tool. Take it to a qualified professional when service or repair is required.
3. Do not operate power tools in explosive atmospheres, such as in the presence of flammable liquids, gasses or dust. Power tools create sparks which may ignite the dust or fumes.
4. Only use accessories which are specifically designed for use with a Rotary Tool.
5. Wear approved safety eye/face shield, ear defenders and hand protection.
6. When not in use, disconnect from the power source and store in a safe, dry childproof location.

7. Avoid body contact with grounded surfaces such as pipes, radiators, ranges and refrigerators.
8. When operating a power tool outside, use an outdoor extension cord marked "W-A" or "W".
9. DO NOT use this Rotary Tool for tasks it is not designed to perform.
10. DO NOT abuse the cord. Never use the cord to carry the tool or pull the plug from an outlet.
11. DO NOT operate the Rotary Tool if you are tired or under the influence of alcohol, drugs or intoxicating medication.
12. DO NOT expose power tools to rain or wet conditions.
13. DO NOT use the Rotary Tool if the switch does not turn it ON or OFF.

### DISPOSAL

At the end of the useful life of the GreatNeck Rotary Tool, dispose of the components according to all state, federal, and local regulations.

### PURPOSE

The GreatNeck Rotary Tool with 35 Piece Accessory Kit polishes, grinds, cuts, shapes and sands metals and is great for home hobbyists or garage machinists whether professional or novice. All tools needed are at hand and it accepts all standard accessories and attachments.

### PRODUCT SPECIFICATIONS

<b>Voltage:</b>	120V/60Hz
<b>Input Power:</b>	1.2 AMP
<b>No-Load Speed:</b>	10,000-35,000 RPM
<b>Collet Capacity:</b>	1/8" - 3/32"
<b>Spindle Lock:</b>	Yes
<b>Cable Length:</b>	6 Feet
<b>Certificate:</b>	c-UL-us



**GreatNeck®**

## ROTARY TOOL

### **WARNING**

Double insulated tools are equipped with a polarized plug (one blade is wider than the other). This plug will fit in a polarized plug only one way. If the plug does not fit fully in the outlet, reverse the plug. If it still does not fit, contact a qualified electrician to install a polarized outlet. Do not change the plug in any way. Double insulation eliminates the need for the three-wire grounded power cord and grounded power supply system.

### **OPERATING INSTRUCTIONS**

#### **WARNING**

Ensure you read, understand and apply safety instructions before use.

1. Always inspect, maintain and operate in accordance with ANSI safety code for power tools and other local safety codes and regulations.
2. Use clamps or other practical ways to secure and support the work piece to a stable platform.
3. Do not force the tool. Use the correct tool for the job.
4. Disconnect the plug from the power source before making any adjustments, changing accessories or storing the tool.
5. Check for misalignment or binding moving parts, breakage of parts and any other condition that may affect the tool's operation. If damaged, have the tool serviced before using.
6. Use only accessories that are recommended by the manufacturer for your model.
7. Hold tool by insulated gripping surfaces when performing an operation where the cutting tool may contact hidden wiring or its own cord.
8. Always make sure the work surface is free from nails and other foreign objects.
9. Never hold the work piece in one hand and the tool in the other hand when in use. Never place the hands near or below the cutting surface.
10. Never lay work piece on hard surfaces like concrete, stone, etc.
11. After changing the bits and accessories or making adjustments, make sure the collet nut and any other adjustment devices are securely tightened.

12. Always use the correct collet size.
13. Always check accessory bits, grinding stones, cut-off wheels, etc. for damage before each use.
14. Never use dull or damaged bits. Sharp bits must be handled with care.
15. Never touch the bit during or immediately after use.
16. The rotary tool is wired at the factory for 110–120V operation. It must be connected to a 110–120V, 15A time delayed fuse or circuit breaker. To avoid shock or fire, replace power cord immediately if it is worn, cut or damaged in any way.
17. Avoid accidental starting. Be sure switch is OFF before plugging in.
18. Remove adjusting keys or wrenches before turning the tool ON.

**NOTE:** Most commonly used bits and accessories with 1/8" and 3/32" shanks will fit this tool. Rotary Tool accessories, such as a drill press designed for other rotary tools, may not fit this tool.

#### **WARNING**

If any part is missing or damaged, do not plug the Rotary Tool into the power source until the missing or damaged part is replaced.

#### **WARNING**

To avoid fire or toxic reaction, never use gasoline, naphtha, acetone, lacquer thinner or similar highly volatile solvents to clean the tool.



# GreatNeck®

## ROTARY TOOL

### ASSEMBLY & OPERATION

#### SPEED SELECTION

Set Rotary Tool speed by rotating the variable speed control dial (1) to the appropriate speed (see Fig. 1). Position the speed control dial at “1” for slowest speed, “3” for medium speed and at “MAX” for the highest speed.

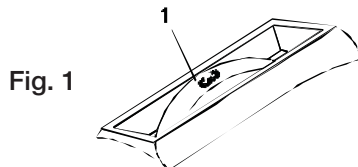


Fig. 1

#### ON/OFF SWITCH

To turn the switch ON, push on the lower part of the ON/OFF switch (1) (see Fig. 2). To turn the switch OFF, push on the upper part of the ON/OFF switch (2).

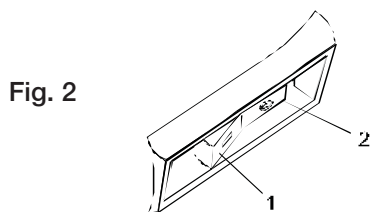


Fig. 2

#### CHANGING THE COLLET

Some accessories require the use of different sized collets. Collet sizes can be 1/16", 3/32" and 1/8". It is important to ensure that the collet size matches the accessory.

**NOTE:** This tool includes two of the most commonly used collets: 3/32" and 1/8".

#### WARNING

Using a collet that is too large for the accessory will result in the accessory possibly being thrown from the tool causing serious injury.

1. Turn the tool switch OFF and remove the plug from the power source.
2. Depress the spindle lock button (1) and slowly turn the collet nut (2) until the spindle lock button locks the spindle. (see Fig. 3)
3. While holding the spindle lock button down, turn the collet nut counter clockwise until it is removed.
4. Remove the collet (3) by pulling it out of the spindle (4).

5. Insert the replacement collet into the spindle and replace the collet nut by turning it clockwise while holding the spindle lock button down.

**NOTE:** Do not tighten the collet nut without an accessory installed in the collet. You will damage the collet.

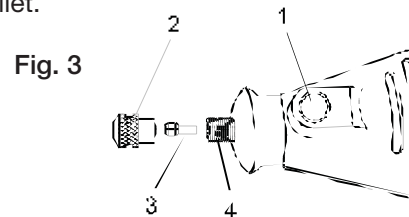


Fig. 3

#### INSTALLING ACCESSORIES

1. Turn the switch OFF and disconnect the tool from the power source.
2. Depress the spindle lock button (1) and slowly turn the collet nut (2) until the spindle lock button locks the spindle.
3. While holding the spindle lock button down, turn the collet nut counter clockwise until the collet is loose inside the collet nut.

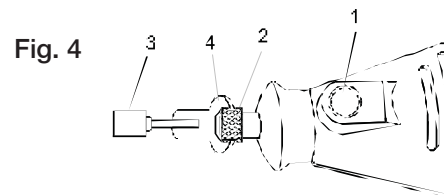


Fig. 4

4. Insert accessory (3) into collet.

#### NOTE:

- a) Make sure the correct collet is used for the accessory. If collet is too large, replace the collet with the next smaller size.
- b) Insert accessory at least 3/4" into the collet.

5. Press the spindle lock button and engage it in the spindle. While holding the spindle lock button down, hand tighten the collet by turning it clockwise.

**NOTE:** Do not use pliers to tighten the collet nut. Use the small wrench (4) supplied. Over tightening will cause damage to the tool.

6. Pull on the accessory to ensure it is securely in place.



# GreatNeck®

## ROTARY TOOL

### SELECTING PROPER SPEEDS

Different speeds are required depending upon the type of operation being performed. The following chart outlines those basic speeds:

Operation	Speed
Cutting Metal	5 – MAX
Sanding Wood	5 – MAX
Cutting Hard Metal	5 – MAX
Engraving Metal	4 – 5
Deburring	4 – 5
Drilling Holes	4 – 5
Removing Rust	3 – 4
Sharpening	3 – 4
Polishing	1 – 2

### Accessory Kit Contents

Illustration	Description	Shape	Qty
	Aluminum oxide grinding stone	Cylinder 3/8"	1
	Aluminum oxide grinding stone	Cone 5/8"	1
	Aluminum oxide grinding stone	Parabolic 3/8"	1
	Aluminum oxide grinding stone	Cylinder 13/32"	1
	Aluminum oxide grinding stone	Cylinder 25/32"	1
	Felt polishing wheel	1/2"	2
	Felt polishing wheel	1"	2
	Mandrel	1/8" for felt polishing wheels	1
	Bristle brush	3/4" radial	1
	Sanding band	1/2" 60-grit	3
	Drum sander	1/2" with 1/8" shank	1
	Sanding disc	3/4" 60-grit	3
	Heavy-duty Cut-off wheel	15/16" x 0.031"	6
	Regular-duty cut-off wheel	15/16" x 0.025"	6
	Screw mandrel	1/8" for sanding discs, cut-off wheels, cloth wheels & grinding wheels	1
	Dressing stone	3/8" x 1" square	1
	Collet	1/8" (packed in tool)	1
	Collet	3/32"	1
	Wrench	For collet nut, drum sander & screw mandrel	1







# GreatNeck®

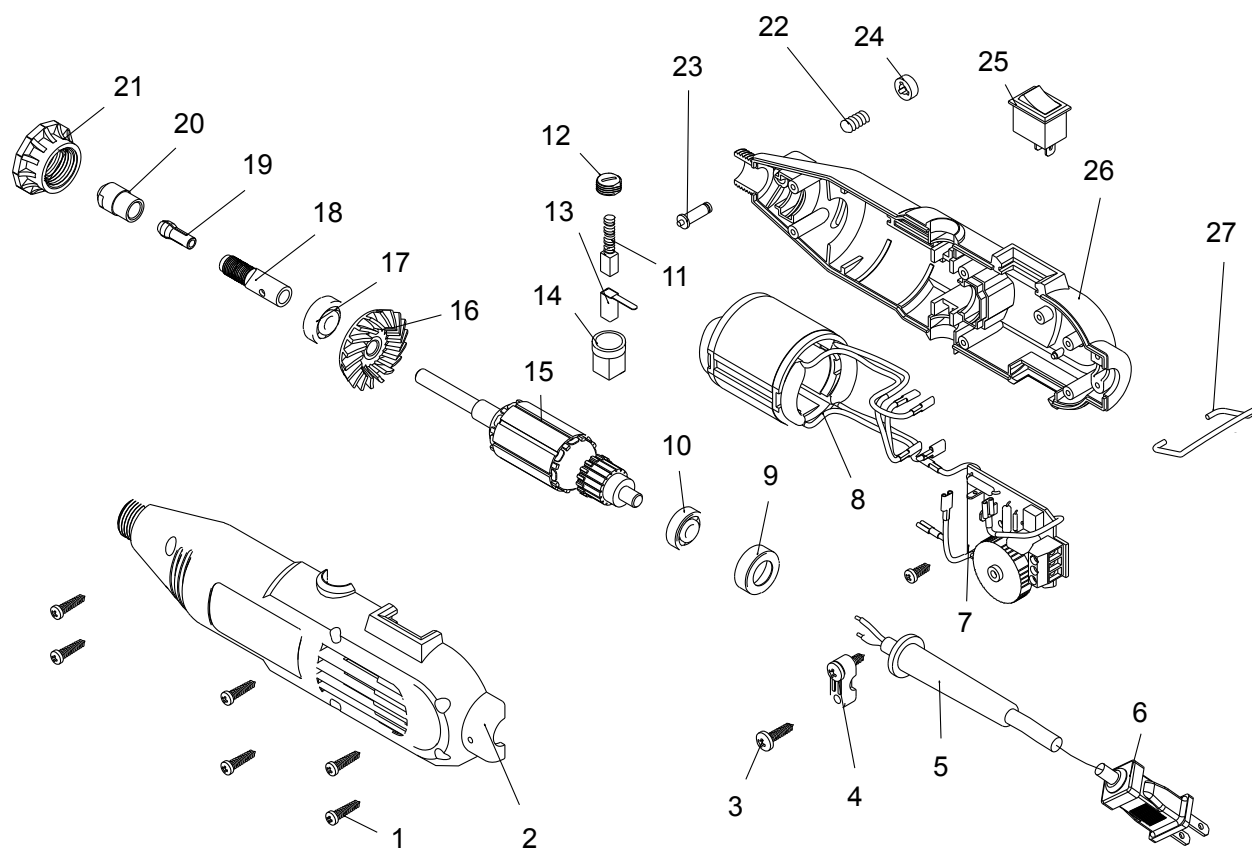
## ROTARY TOOL

### Parts List

Item #	Part Name	Quantity
1	Screw	6
2	Left Enclosure	1
3	Screw	2
4	Cord Clamp	1
5	Cord Guard	1
6	Power Plug	1
7	Variable Speed PCB	1
8	Stator	1
9	Bearing Sleeve	1
10	Bearing 606-2Z	1
11	Carbon Brush	2
12	Carbon Brush Cap	2
13	Brush Holder	2
14	Brush Holder Support	2

Item #	Part Name	Quantity
15	Rotor	1
16	Fan	1
17	Bearing 626-2Z	1
18	Output Shaft	1
19	Collet	1
20	Collet Nut	1
21	Head Nut	1
22	Shaft Lock Spring	1
23	Shaft Locking Pin	1
24	Shaft Lock Button	1
25	Switch	1
26	Right Enclosure	1
27	Hook	1

### Parts Diagram



### NOTE:

Not all components of the Rotary Tool are replacement items, but are illustrated as a convenient reference for location and position in the assembly sequence.

**GreatNeck®****ROTARY TOOL****GreatNeck® ONE YEAR LIMITED WARRANTY**

If within one year from the date of purchase you find any defect in material or workmanship in this GreatNeck® product, through normal usage, either return it to the place of purchase, or send it to GreatNeck® Tools for repair or replacement at our discretion. In order to obtain this service send your tool and proof of purchase, transportation pre-paid, to GreatNeck® Tools LLC Q.A. Dept., 3580 E. Raines Road #3, Memphis, TN 38118. We will not be responsible for lost or damaged goods during transportation, please insure your package.

GreatNeck® does not provide any warranty for products labeled other than GreatNeck® Tools LLC. GreatNeck® will not provide any warranty for products subjected to abnormal use. Abnormal use includes, but is not limited to, abuse, accident, alteration, neglect, and unauthorized or unreasonable use or repairs. This warranty does not cover blades, bits, files, sheathes, cases, accessories, bulbs, batteries, calibration, or finishes. We recommend that you maintain your tools and sharpen or replace blades, batteries, bits and files as necessary. GreatNeck® reserves the right to make any changes in construction or design at any time without any obligation in incorporating such changes to tools or equipment previously sold.

GreatNeck® is not liable for consequential or incidental damages arising from the breach of this, or any other, warranty whether expressed, implied, or statutory. Some states do not allow the exclusion or limitation of incidental or consequential damages, so the above exclusion may not apply to you. This warranty gives you specific legal rights, and you may also have other rights, which vary from state to state.

This product is not guaranteed if used for industrial or commercial purposes. Please visit our website for full warranty information. TOLL FREE HELPLINE: 1-866-458-2472.

**CONTACT US**

3580 E. Raines Road, Suite 3, Memphis, TN 38118  
(1-866-458-2472)

