

Please read and save these instructions. Read through this owner's manual carefully before using product. Protect yourself and others by observing all safety information, warnings, and cautions. Failure to comply with instructions could result in personal injury and/or damage to product or property. Please retain instructions for future reference.

**GreatNeck®**

18V CORDLESS DRILL

FOR CUSTOMER SERVICE

Technical Question?

CALL 1-800-457-0600

sales@greatnecksaw.com

UNPACKING

After unpacking unit, inspect carefully for any damage that may have occurred during transit. Check for loose, missing, or damaged parts. If any damage is observed, a shipping damage claim must be filed with carrier.

SPECIFICATIONS AND DIMENSIONS

Voltage: 18V DC
Battery: Ni-Cad 1.0Ah
Speed: 0-550 RPM
Torque Control: 21 Position
Chuck: 3/8"
Charger: 3-5 Hours



This is the safety alert symbol. It is used to alert you to potential personal injury hazards. Obey all safety messages that follow this symbol to avoid possible injury or death.



WARNING: Indicates a hazardous situation which, if not avoided, could result in death or serious injury.



IMPORTANT: READ THESE INSTRUCTIONS BEFORE OPERATING
BEFORE USING THIS DEVICE, READ THIS MANUAL COMPLETELY AND THOROUGHLY, UNDERSTAND ITS OPERATING PROCEDURES, SAFETY WARNINGS AND MAINTENANCE REQUIREMENTS.



**GreatNeck®**

18V CORDLESS DRILL



SAFETY RULES

1. Know your tool. Read this manual carefully. Learn the tool's applications and limitations, as well as, potential hazards specific to it.
2. Ground all tools. If the tool is equipped with three-pin plug, it should be plugged into a three-pin electrical socket. Never remove the ground pin. Do not modify the plug provided. If it will not fit the outlet, have the proper outlet installed by a qualified electrician. Failure to properly ground unit could result in severe electrical shock and / or death. Always try to avoid body contact with grounded surfaces, such as radiators, cooking ranges and any other fixed appliance with metal surfaces.
3. Do not abuse electrical cord. Never use the cord to carry tools or pull the plug from an outlet. Keep cord away from heat, sharp edges or moving parts. Always check the extension cords for damage before use. Replace damaged cords immediately. Damaged cords increase the risk of electric shock.
4. Keep work area clean and well lit. Cluttered or dark work areas invite accidents.
5. Keep children away. All children should be kept away from the work area. Never let a child handle a tool without strict adult supervision.
6. Do not operate this tool if under the influence of alcohol or drugs. Read warning labels on prescriptions to determine if your judgment or reflexes are impaired while taking drugs. If there is any doubt, do not attempt to operate.
7. Use safety equipment. Eye protection should be worn at all times when operating this tool. Use ANSI approved safety glasses. Everyday eye-glasses are NOT safety glasses. Dust mask, non-skid safety shoes, hard hat, or hearing protection should be used in appropriate conditions.
8. Wear proper apparel. Loose clothing, gloves, neck- ties, rings, bracelets, or other jewelry may present a potential hazard when operating this tool. Keep all apparel clear of the tool.
9. Don't overreach. Keep proper footing and balance at all times when operating this tool.
10. Always disconnect the tool from the power source before making any adjustments, storing, servicing, or changing accessories. Such preventative safety measures reduces the risk of starting the tool accidentally.
11. Do not use the tool if the switch does not turn it on and off. Any tool that cannot be controlled with the switch is dangerous and must be repaired.
12. Check for damage. Check your tool regularly. If part of the tool is damaged it should be carefully inspected to make sure that it can perform its

intended function correctly. If in doubt, the part should be repaired. Refer all servicing to a qualified technician. Consult your dealer for advice.

13. Keep away from flammables. Do not attempt to operate this tool near flammable materials or combustibles. Failure to comply may cause serious injury or death.
14. Store idle tools out of the reach of children and untrained persons. Tools may be dangerous in the hands of untrained users.



POWER TOOL SAFETY

- Do not expose your power tool to wet or damp conditions and NEVER use in rain. Regularly check the power cord of your machine and any extension cord that you are using for damage.
- Do not carry or pull the machine with the power cord. Ensure the cord is clear from hot surfaces, oil or sharp objects.
- A battery operated tool with integral batteries or a separate battery pack must be recharged only with the specified charger for the battery. A charger that may be suitable for one type of battery may create a risk of fire when used with another battery.
- Use battery operated tool only with specifically designed battery pack. Use any other batteries may create a risk of fire.
- Ensure dust collecting device supplied with our power tool is connected correctly before use.
- Before plugging your power tool into the power outlet, make sure the power tool is in the OFF position.
- Check that wrenches or adjusting keys have been removed. Any wrench or key left attached to a moving part can result in injury.
- Keep your power tool clean and well serviced at all times.
- Never adjust or service any power tool before disconnecting from the main electrical supply.
- Always use the correct tool for the job and never force the tool to work harder than it is designed to do.
- Never use your power tool with broken parts such as switches, guide fences or leg stands.
- Only have your power tool serviced by a qualified repair agent using manufacturer's recommended parts.

**GreatNeck®**



GreatNeck®

18V CORDLESS DRILL



SAFETY INSTRUCTIONS

1. KEEP GUARDS IN PLACE and in working order.
2. REMOVE ADJUSTING KEYS & WRENCHES. Before turning on the power tool, make sure the keys and adjusting wrenches have been removed.
3. KEEP WORK AREA CLEAN. Cluttered areas and benches invite accidents.
4. ALWAYS REMAIN ALERT WHEN THE SAW IS IN USE. Inattention on the part of the operator may lead to serious injury.
5. DON'T USE IN A DANGEROUS ENVIRONMENT. Don't use power tools in damp or wet locations or expose them to rain. Keep work area well lit.
6. KEEP CHILDREN AWAY. All visitors should remain at a safe distance from work area.
7. MAKE WORKSHOP CHILD-PROOF with padlocks, master switches or by removing starter keys.
8. USE THE RIGHT TOOL. Don't force a tool or attachment to do a job for which it was not designed.
9. USE THE PROPER EXTENSION CORD. Make sure your extension cord is in good condition. When using an extension cord, be sure to use one heavy enough to carry the current your product will draw. An undersized cord will cause a drop in line voltage resulting in loss of power and overheating. If in doubt, use the next heavier gauge. The smaller the gauge number, the heavier the cord.
10. DON'T FORCE THE TOOL. It has been designed to operate at maximum safety and performance levels.
11. DO NOT FORCE THE MATERIAL BEING CUT. Always let the blade cut at its own speed.
12. ALWAYS keep your power tools away from children.
13. Only have your power tool serviced by a qualified repair agent using manufacturers recommended parts.
14. NEVER STAND ON TOOL. Serious injury could occur if the tool is tipped or if the cutting tool is unintentionally contacted.
15. CHECK DAMAGED PARTS. Before further use of the tool, damaged part(s), (i.e., guard) should be carefully checked to determine that it will operate properly and perform its intended function. Check for alignment of moving parts, binding of moving parts, breakage of parts, mounting and any other condition that may affect the saw's operation. A guard or other part that is damaged should be properly repaired or replaced.
16. Replace damaged bits immediately. DO NOT USE

- DAMAGED BITS. They may cause bodily injury.
17. NEVER LEAVE TOOL RUNNING UNATTENDED. Turn power off. Don't leave tool until it comes to a complete stop.



WARNING

- Only use qualified repair agents to service this power tool.
- Only use qualified electrician to repair any damaged wiring.
- NEVER remove the grounding prong from the power cord or extension cord.

This power tool is supplied with all the relevant safety guards and features, it should be checked before every operation, this manual should be read and kept in a safe place. Whilst we warn of all the possible risks attached to using power tools any operator must have read and understood the manual and apply their own caution and common sense when using this power tool. Following this guide will greatly reduce your risk of electric shock or injury.

GROUNDING TOOLS

Electrical Powered Connections Any electric powered tool that is marked Ground Required must have fitted a three wired power cord. The main importance of this is the green wire within the cord, this green wire must at all times be connected to the grounding prong of the plug. This prong must never be removed or discarded. The green wire Must NEVER be connected to any other prong. The Three prong plug must only be connected to the power supply through a three prong power outlet. The Illustration above shows a three prong plug and outlet.

3 PRONG PLUG AND OUTLET

Only use qualified repair agents to service this power tool. Only use qualified electrician to repair any damaged wiring. NEVER remove the grounding prong from the power toll or extension cord. This product must be grounded. In the event of a malfunction or breakdown, grounding provides a path of least resistance for electric current to reduce the risk of electric shock. This product is equipped with an electric cord having an equipment-grounding conductor and a grounding plug. The plug must be plugged into a matching outlet that is properly installed and grounded in accordance with all local codes and ordinances. Do not modify the plug provided. If it will not fit the outlet, have the proper outlet installed by a qualified electrician. Check with a qualified electrician or service personnel if the grounding instructions are not completely understood, or if in doubt as to whether the product is properly grounded.





GreatNeck®

18V CORDLESS DRILL

Repair or replace a damaged or worn cord immediately. This product is for use on a nominal 120 V circuit and has a grounding plug similar to the plug illustrated in Table 1. Only connect the product to an outlet having the same configuration as the plug. Do not use an adapter with this product.

POWER EXTENSION CORDS:

Any power tool marked 'Grounding required' MUST only be connected to a three wire extension cord. Only double insulated tools can be connected to two wire cords. When using any extension cord the machine will suffer a power reduction due to the drop in voltage caused by the length of the cord. This can be partially offset by selecting extension cords with lower gauge wire.

MINIMUM GAGE FOR CORD SETS					
Total Length of Cord in Feet(Meter)					
		0-25 (0-7.6)	26-50 (7.9-15.2)	51-100 (15.5-30.5)	101-150 (30.8-45.7)
Ampere More Than	Rating Not More Than	AWG			
06		181	61	61	4
61	0	181	61	41	2
10	12	181	61	41	2
12	16	14	14	Not Recommended	

USING YOUR DRILL

VARIABLE SPEED CONTROLLED TRIGGER SWITCH

Your tool is equipped with a variable speed trigger switch (Fig. 1). The tool speed can be controlled from the minimum to the maximum nameplate RPM by the pressure you apply to the trigger. Apply more pressure to increase the speed and release pressure to decrease speed.

FORWARD/REVERSING LEVER & TRIGGER LOCK

Your tool is equipped with a forward/reversing lever and trigger lock (Fig. 1) located above the trigger. This was designed for changing rotation of the chuck, and for locking the trigger in an "OFF" position to help prevent accidental starts and accidental battery discharge. For forward rotation, (with chuck pointed away from you) move the lever to the far left. For reverse rotation move the lever to the far right. To activate trigger lock move lever to the center "off" position.

MOUNTING AND DISMOUNTING THE BIT

MOUNTING THE BIT

Loosen the sleeve by turning it toward the left (in the counterclockwise direction as viewed from the front)

to open the clip on the keyless chuck. After inserting a driver bit, etc., into the keyless drill chuck, tighten the sleeve by turning it toward the right (in the clockwise direction as viewed from the front).

NOTE: If the sleeve becomes loose during operation, tighten it further. The tightening force becomes stronger when the sleeve is tightened.

DISMOUNTING THE BIT

Loosen the sleeve by turning it toward the left (in the counterclockwise direction as viewed from the front), and then take out the bit.

DRILLING

Place the bit on the work surface and apply firm pressure before starting. Too much pressure will slow the bit and reduce drilling efficiency. Too little pressure will cause the bit to slide over the work area and dull the point of the bit. If the tool begins to vibrate, free the bit from the workpiece.

TORQUE ADJUSTMENT

By turning the adjustment ring (Fig. 1) the required torque can be adjusted. The arrow aligns with the adjusted state.

CHARGING THE BATTERY

Plug charger into outlet. Insert battery into charger. RED and GREEN lights means battery is charging. Charge for five hours and remove battery. Battery is a consumable item and it is not warranted. Overcharging will ruin the battery. Do not charge this battery over 5 hours. Never leave a charger unattended.

MAINTENANCE



WARNING: To reduce the risk of injury, always unplug the charger and remove the battery pack from the charger or tool before performing any maintenance. Never disassemble the tool, battery pack or charger.

BATTERY USE AND CARE

- The specified charger for the battery. A battery operated tool with integral batteries or a separate battery pack must be recharged only with a charger that may be suitable for one type of battery may create a risk of fire when used with another battery.
- Use battery operated tool only with specifically designed battery pack.





18V CORDLESS DRILL

Figure 1



**GreatNeck®**

18V CORDLESS DRILL

- Use of any other batteries may create a risk of fire.
- NEVER place hands or other body parts near the drill bit or chuck during operation. Hold the drill by its handle only. Because the cordless driver drill operated by battery power, be aware of the fact that it can begin to operate at any time.
- When battery pack is not in use, keep it away from other metal objects like paper clips, coins, keys, nails, screws, or other small metal objects that can make a connection from one terminal to another.
- Shorting the battery terminals together may cause burns or a fire.

WARNING

WARNING: Improper use of the battery or battery charger can lead to serious injury.

To avoid these injuries:

NEVER

- NEVER disassemble the battery.
- NEVER incinerate the battery, even if it damaged or is completely worn out. The battery can explode in a fire.
- NEVER short-circuit the battery.
- NEVER insert any objects into the battery charger's air vents. Electric shock or damage to the battery charger may result.
- NEVER charge outdoors. Keep the battery away from direct sunlight and use only where there is low humidity and good ventilation.
- NEVER charge when the temperature is below 32°F (0°C) or above 104°F (40°C).
- NEVER connect two battery charger together.
- NEVER insert foreign objects into the hole for the battery or the battery charger.
- NEVER use a booster transformer when charging.
- NEVER use an engine generator or DC power to charge.
- NEVER store the battery or battery charger in places where the temperature may reach or exceed 104°F (40°C).

ALWAYS

- ALWAYS operate charger on standard household electrical power (120 volts). Using the charger on any other voltage may overheat and damage the charger.
- ALWAYS wait at least 15 minutes between charges to avoid overheating the charger.
- ALWAYS disconnect the power cord from its receptacle when the charger is not in use.

EXCHANGING THE BATTERY CLIP

Removing battery pack: Press the two buttons (Fig. 1, Pg. 5) and slide the battery pack down to remove. Inserting battery pack: Slide the battery pack into the holder on the underside of the handle until it latches into place.

DISPOSAL OF THE EXHAUSTED BATTERY

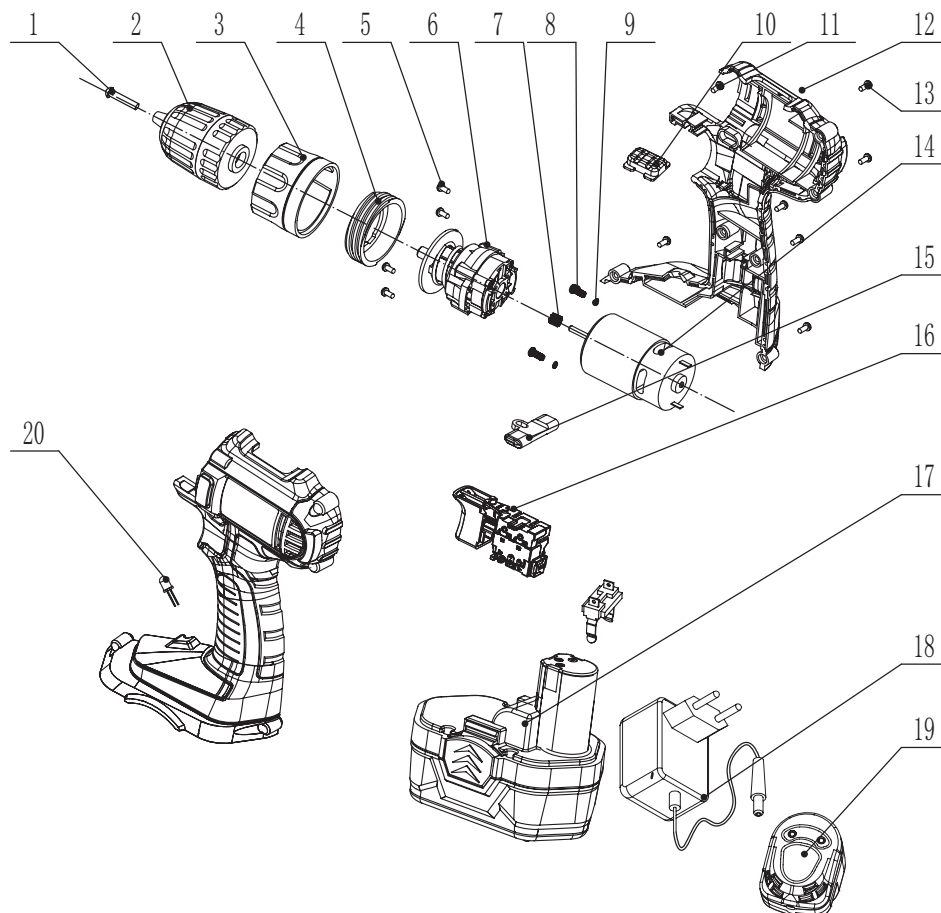
WARNING: Do not dispose of the exhausted battery. The battery must explode if it is incinerated. The product that you have purchased contains a rechargeable battery. The battery is recycleable. At the end of its useful life, under various state and local laws, it may be illegal to dispose of this battery into the municipal waste stream. Check with your local solid waste officials for details in your area for recycling options or proper disposal.




GreatNeck®

18V CORDLESS DRILL

Exploded Assembly Diagram



PART	DESCRIPTION	PART	DESCRIPTION
80139-1	Anti-screw	80139-12	Housing
80139-2	Chuck	80139-13	Screw
80139-3	Torque Ring	80139-14	Motor
80139-4	Torque Inner Ring	80139-15	Handspike
80139-5	Screw	80139-16	Switch
80139-6	Gear Unit	80139-17	Battery Unit
80139-7	Motor Gear	80139-18	Charger
80139-8	Screw	80139-19	Charger Base
80139-9	Spring Pad	80139-20	Light
80139-10	Decorative Cover		
80139-11	Screw		



**GreatNeck®****18V CORDLESS
DRILL****90 DAY LIMITED WARRANTY**

GreatNeck Tools LLC will warranty this product for 90 days from the date of original purchase. If you find any defect in material or workmanship, through normal usage, return it to the place of purchase, or to GreatNeck for repair or replacement at our discretion. In order to obtain this service send your tool and proof of purchase, transportation pre-paid, to GreatNeck Q.A. Dept., 3850 Raines Road #3, Memphis. We will not be responsible for lost or damaged goods during transportation, please insure your package. If our inspection verifies the defect, we will either repair or replace the product at our election, or we may elect to refund the purchase price if we cannot readily and quickly provide you with a replacement. We will return repaired products at our expense, but if we determine there is no defect, or that the defect resulted from causes not within the scope of our warranty, then you must bear the cost of returning the product.

GreatNeck does not provide warranty for products labeled other than GreatNeck Tools LLC. GreatNeck will not provide any warranty for products subjected to abnormal use. Abnormal use includes, but is not limited to, abuse, accident, alteration, neglect, and unauthorized or unreasonable use or repairs. This warranty does not cover bits, blades, files, batteries, or calibration. We recommend that you maintain your tools and sharpen or replace blades, bits, files, and batteries as necessary. GreatNeck reserves the right to make any changes in construction or design at any time without any obligation in incorporating such changes to tools or equipment previously sold.

GreatNeck makes every effort to assure that its products meet high quality and durability standards, and warrants to the original purchaser that this product is free from defects in materials and workmanship for the period of one year from the date of purchase. This

warranty does not apply to damage due directly or indirectly to misuse, abuse, negligence or accidents, repairs or alterations outside our facilities, criminal activity, improper installation, normal wear and tear or to lack of maintenance.

We shall in no event be liable for death, injuries to persons or property, or for incidental, contingent, special or consequential damages arising from the use of our product. Some states do not allow the exclusion or limitation of incidental or consequential damages, so the above limitation of exclusion may not apply to you. THIS WARRANTY IS EXPRESSLY IN LIEU OF ALL OTHER WARRANTIES, EXPRESS OR IMPLIED, INCLUDING THE WARRANTIES OF MERCHANTABILITY AND FITNESS. This warranty gives you specific legal rights, and you may also have other rights, which vary from state to state.

PLEASE READ THIS CAREFULLY:

GreatNeck and /or it's distributors have provided the parts list and assembly diagram as a reference only. Neither GreatNeck and/or it's distributors make any representation or warranty of any kind to the buyer and/or user of this tool that he or she is qualified to do any repairs or replace any parts of this product. GreatNeck and it's distributors expressly state that all repairs or part replacements should be done by certified or licensed technicians. The buyer assumes all risk and liability arising out of his or her repairs or parts replacement to the original product.

