

Please read and save these instructions. Read through this owner's manual carefully before using product. Protect yourself and others by observing all safety information, warnings, and cautions. Failure to comply with instructions could result in personal injury and/or damage to product or property. Please retain instructions for future reference.



1 LITER PNEUMATIC BRAKE BLEEDER WITH AUTOMATIC REFILLING BOTTLE

FOR CUSTOMER SERVICE

Technical Question?

CALL 1-866-458-2472
customerservice@oem-tools.com

UNPACKING

After unpacking unit, inspect carefully for any damage that may have occurred during transit. Check for loose, missing, or damaged parts. If any damage is observed, a shipping damage claim must be filed with carrier. DO NOT use the OEMTOOLS® 1 Liter Pneumatic Brake Fluid Bleeder with Automatic Refilling Bottle if broken, bent, cracked, or damaged parts including labels are noted. Any Brake Fluid Bleeder that appears damaged in any way, operates abnormally, or is missing parts should be removed from service immediately. If you suspect that the Brake Fluid Bleeder was subjected to shock load a load that was dropped suddenly, unexpectedly, etc., immediately discontinue use until it has been checked by a factory authorized service center.



⚠ WARNING

The following safety information is provided as a guideline to help you operate your 1 Liter Pneumatic Brake Fluid Bleeder with Automatic Refilling Bottle under the safest possible conditions. Any tool or piece of equipment can be potentially dangerous to use when safety or safe handling instructions are not known or not followed. The following safety instructions are to provide the user with the information necessary for safe use and operation. Please read and retain these instructions for the continued safe use of your Brake Fluid Bleeder. Failure to follow instructions listed below may result in serious injury. In addition, make certain that anyone who uses the equipment understands and follows these safety instructions as well.

Explanation of Safety Signal Words

⚠ WARNING Indicates a potentially hazardous situation which, if not avoided, could result in death or serious injury.

⚠ CAUTION Indicates a potentially hazardous situation which, if not avoided, may result in minor or moderate injury.

CAUTION Used without the safety alert symbol indicates a potentially hazardous situation which, if not avoided, may result in property damage.

NOTES Provide clarity and helpful information.

Thank you very much for choosing an OEMTOOLS® Product!

For future reference, please register your new tool at www.oem-tools.com and complete the owner's record below

Model _____ **Purchase Date** _____

Save the receipt, warranty and these instructions. It is important that you read the entire manual to become familiar with this product before you begin using it. This product is designed for certain applications only. OEMTOOLS® cannot be responsible for issues arising from modification. We strongly recommend that this product is not modified and/or used for any application other than that for which it was designed. If you have any questions relative to a particular application, DO NOT use the product until you have first contacted customer service to determine if it can or should be performed on the product.

⚠ WARNING Pursuant to California Proposition 65, this product contains chemicals known to the state of California to cause cancer and birth defects or other reproductive harm. Wash hands after handling.



1 LITER PNEUMATIC BRAKE BLEEDER WITH AUTOMATIC REFILLING BOTTLE

⚠ IMPORTANT INSTRUCTIONS AND SAFETY RULES

1. Know your product. Read this manual carefully. Learn the product's applications and limitations, as well as potential hazards specific to it. The use of this product is simple and straightforward if you follow the instructions. When operating this product, use common sense and only use this product for its intended purpose.
2. Maintain labels and nameplates on this product. These carry important information. If unreadable or missing, contact OEMTOOLS® for a replacement.
3. Maintain this product with care. Keep it dry and clean – and free from brake fluid, oil, and grease (if applicable).
4. Check for damage. Check your product regularly. If part of the product is damaged, it should be carefully inspected to make sure that it can perform its intended function correctly. If in doubt, the part should be repaired. Refer all servicing to a qualified technician. Consult your dealer for advice.
5. Check for misalignment or binding of moving parts, breakage of parts, and any other condition that may affect the product's operation.
6. DO NOT use a damaged product. Tag damaged products "DO NOT USE" until repaired. If damaged, have the product serviced before using. Many accidents are caused by poorly maintained products.
7. Service must be performed only by qualified repair personnel. Service or maintenance performed by unqualified personnel could create a risk of injury.
8. When servicing a product, use only identical replacement parts. Use of unauthorized parts or failure to follow maintenance instructions could create a risk of injury.
9. Use only accessories that are recommended by the manufacturer for your model. Accessories that may be suitable for one product may become hazardous when used on another product.
10. Keep work area clean and well lit. Cluttered or dark work areas invite accidents.
11. Maintain a safe working environment. Keep the work area well lit. Make sure there is adequate surrounding workspace. Keep the work area free of obstructions, grease, oil, trash, and other debris. DO NOT use this product in a damp or wet location.
12. Keep children away from the work area. Never let a child handle this product without strict adult supervision.
13. Store this product out of the reach of children and untrained persons. This product may be dangerous in the hands of untrained users.
14. DO NOT operate this product if under the influence of alcohol or drugs. Read warning labels on prescriptions to determine if your judgment or reflexes are impaired while taking drugs. If there is any doubt, DO NOT attempt to operate.
15. Use safety equipment. Eye protection should be worn at all times when operating this product. Use ANSI approved safety glasses. Everyday eyeglasses are NOT safety glasses. Dust mask, non-skid safety shoes, hard hat or hearing protection should be used in appropriate conditions.
16. Wear proper apparel. Loose clothing, gloves, neck-ties, rings, bracelets or other jewelry may present a potential hazard when operating this product. Keep all apparel clear of the product.
17. DO NOT overreach. Keep proper footing and balance at all times when operating this product.
18. Keep away from flammables. DO NOT attempt to operate this product near flammable materials or combustibles. Failure to comply may cause serious injury or death.

19. Avoid accidental fire and/or explosion. DO NOT smoke near engine fuel and battery components.
20. We believe the information contained herein to be reliable. However, general technical information is given by us without charge and the user shall employ such information at their own discretion and risk. We assume no responsibility for results or damages incurred from the use of such information in whole or in part. Always refer to specific instructions and technical information supplied by vehicle manufacturer.
21. The manufacturer declines any and all responsibility for property damage or injury if said damage is the result of unskillful handling by the operator or of failure to observe the basic safety rules set forth in the instruction manual.
22. The warnings, precautions, and instructions discussed in this manual cannot cover all possible conditions and situations that may occur. The operator must understand that common sense and caution are factors which cannot be built into this product, but must be supplied by the operator.

PRODUCT DESCRIPTION

The OEMTOOLS® 22505 1 Liter Pneumatic Brake Fluid Bleeder with Automatic Refilling Bottle accurately tests and services many different pressurized systems on your vehicle. Easily bleed brakes, test automotive vacuum systems and more with this durable vacuum pump/brake bleeder.

PRODUCT SPECIFICATIONS

Pneumatic Bleeder	
Vacuum	60%
Tube Length	70"
Container Capacity	1 Liter
Air Consumption	180ltr/min
Air Inlet Size	1/4" – 18 NPT
Inlet Air Pressure	87 to 174 psi
Automatic Refilling Bottle	
Height	11"
Width	4.3"
Spout Length	1.79"
Spout Outside Diameter	0.65"
Clamp Range	0.67"
Container Capacity	1 Liter

OPERATING INSTRUCTIONS

PNEUMATIC BRAKE BLEEDER

1. Turn the vehicle's engine off and chock the vehicle's wheels to prevent the vehicle from moving.
2. Fill the Automatic Fluid Refilling Bottle with clean, new brake fluid. Only use the type of brake fluid recommended by the vehicle manufacturer. Screw the Fill Nozzle onto the Refilling Bottle.
3. Close the Lever on the Fill Nozzle.
4. Remove the cap from the vehicle's master cylinder. Position the bottle onto the master cylinder reservoir and adjust the swivel clamp to properly attach the bottle.
5. Open the Automatic Refilling Bottle Lever.
6. Screw the Gun firmly onto the Fluid bottle, then connect the Bleeding Hose to the Fluid Bottle.
7. Determine the proper brake bleeding sequence from the vehicle service manual. (i.e., right rear caliper, left rear caliper, right front caliper, left front caliper).
8. Clean the vehicle brake caliper with brake parts cleaner (not included).



1 LITER PNEUMATIC BRAKE BLEEDER WITH AUTOMATIC REFILLING BOTTLE

9. Attach the Bleeding Hose to the Bleeder Screw on the vehicle caliper. Then connect the air compressor's air hose to the Gun.
10. Turn on the air compressor and set its regulator at 87 to 174 psi. Do not exceed 174 psi.
11. Squeeze the Trigger to create a vacuum in the Fluid Bottle.
12. Using a bleeder screw wrench (not included), open the bleeder screw until the brake fluid starts flowing into the Fluid Bottle.
13. Squeeze the Trigger until the old brake fluid flows freely into the Fluid Bottle.
14. If the Fill Bottle fluid level gets low:
 - a. Close the Lever and refill the Fill Bottle with clean, new brake fluid.
 - b. Reattach the Fill Bottle to the master cylinder and open its Lever.
 - c. Then resume bleeding the brakes.
15. If the Fluid Bottle is full or when done bleeding the brakes:
 - a. Close then disconnect the air supply from the Gun.
 - b. Empty the Fluid Bottle of old brake fluid.
 - c. Reassemble the Gun and Fluid Bottle and resume bleeding the brakes.
16. When clean, new brake fluid begins to flow into the Fluid Bottle, release the Trigger and retighten the caliper's bleeder screw.
17. Disconnect the Bleeding Hose from the caliper's bleeder screw.
18. Proceed to the vehicle's next wheel and perform the same steps as above.
19. When finished, close the Lever and remove the Fill Bottle.
20. Make sure the master cylinder is full of brake fluid up to, but not over, its full line. (If the master cylinder is too full. Correct this before proceeding.) Then replace the cap on the master cylinder.
21. **WARNING** Before driving the vehicle:
 - a. Depress the brake pedal repeatedly until the brake pedal feels firm.
 - b. Check the brake calipers for leaks.
 - c. Test the brakes thoroughly at slow speed before operating the vehicle under normal conditions.
22. Do not store fluid in the Fill Bottle or the Fluid Bottle. Dispose of excess fluid properly, according to all federal, state, and local guidelines. Store the Brake Fluid Bleeder in a clean, dry location out of reach of children.

WARNING

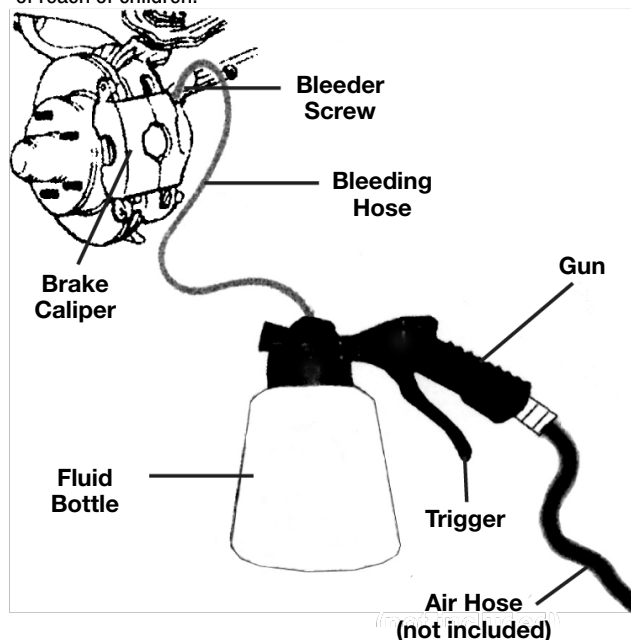
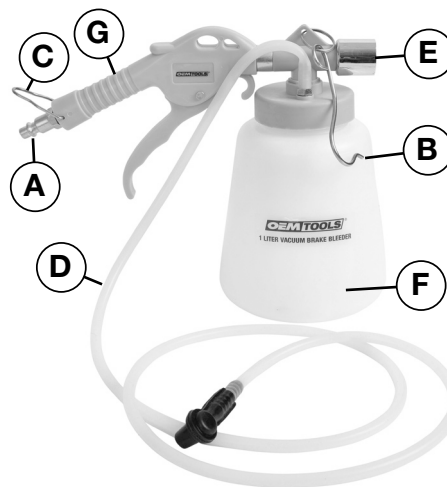
TO PREVENT SERIOUS INJURY FROM ACCIDENTAL OPERATION Turn off the tool, detach the air supply, and release the trigger before performing any inspection, maintenance, or cleaning procedures.

1. Before each use, inspect the general condition of the Brake Fluid Bleeder. Check for misalignment or binding of moving parts, cracked or broken parts, damaged hoses, loose connections, and any other condition that may affect its safe operation.
2. CLEAN WITH A CLEAN, DRY CLOTH ONLY. Do not use any cleaners, solvents, water, or other liquids.
3. Do not store fluid in the Fill Bottle or the Fluid Bottle. Dispose of excess fluid properly, according to all federal, state, and local guidelines. Store the Brake Fluid Bleeder in a clean, dry location out of reach of children.

DISPOSAL

At the end of the useful life of the 1 Liter Pneumatic Brake Fluid Bleeder, dispose of the components according to all state, federal, and local regulations. All technicians opening the refrigeration circuit in automotive air conditioning systems must now be certified in refrigerant recovery and recycling procedures to follow section 609 of the Clean Air Act Amendments of 1990. For information on certification call MACS Worldwide at (215) 631-7020.

PRODUCT LAYOUT (BRAKE BLEEDER)



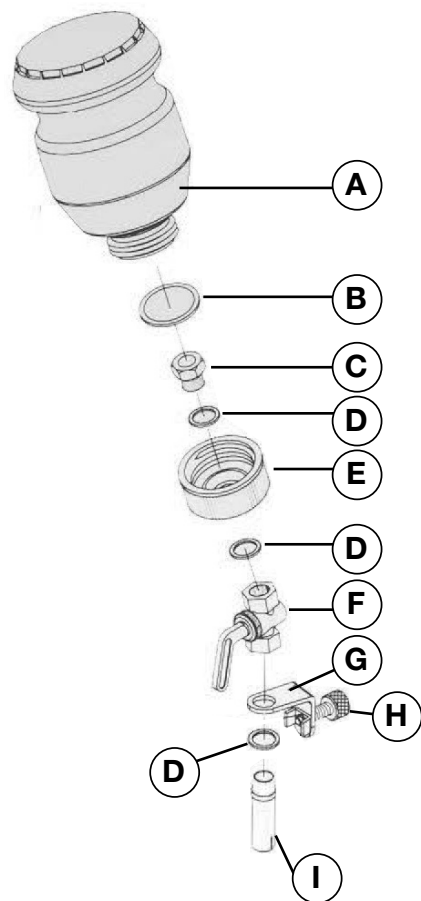
BRAKE BLEEDER PARTS LIST

Figure	Description	Qty.
A	Air Quick Plug Connector	1
B	Hanger	1
C	Trigger Lock	1
D	Bleeding Hose	1
E	Muffler	1
F	Tank	1
G	Gun	1



1 LITER PNEUMATIC BRAKE BLEEDER WITH AUTOMATIC REFILLING BOTTLE

ASSEMBLY DIAGRAM (FLUID REFILLING BOTTLE)



FLUID REFILLING BOTTLE PARTS LIST

Figure	Description	Qty.
A	Tank	1
B	4-1 Packing	1
C	Screw	1
D	Washer	3
E	Cover Housing	1
F	Valve	1
G	Swivel Clamp	1
H	Adjustment Screw	1
I	Oil Outlet Screw	1

WE STAND BEHIND OUR TOOLS. OEMTOOLS® 1 YEAR WARRANTY

If within 1 year from the date of purchase of this OEMTOOLS product, you find any defect in material or workmanship, through normal usage, return it to the place of purchase or to OEMTOOLS® for repair or replacement at our discretion. In order to obtain this service, send your tool and proof of purchase (transportation pre-paid) to: OEMTOOLS® Q.A. Dept., 3580 E. Raines Road #3, Memphis, TN 38118.

We will not be responsible for lost or damaged goods during transportation; please insure your package. If our inspection verifies the defect, we will repair or replace the product, or we may elect to refund the purchase price if we cannot readily and quickly provide you with a replacement. We will return repaired products at our expense, but if we determine there is no defect, or that the defect resulted from causes not within the scope of our warranty, then you must bear the cost of returning the product.

OEMTOOLS® does not provide warranty for products labeled other than OEM® or OEMTOOLS®. OEMTOOLS® will not provide any warranty for products subjected to abnormal use. Abnormal use includes (but is not limited to) abuse, accident, alteration, neglect, and unauthorized or unreasonable use or repairs. This warranty does not cover bits, blades, files, batteries, or calibration. We recommend that you maintain your tools and sharpen or replace blades, bits, files, and batteries as necessary. OEMTOOLS® reserves the right to make any changes in construction or design at any time without any obligation in incorporating such changes to tools or equipment previously sold.

OEMTOOLS® makes every effort to ensure that its products meet high quality and durability standards, and warrants to the original purchaser that this product is free from defects in materials and workmanship. This warranty does not apply to damage due directly or indirectly to misuse, abuse, negligence or accidents, repairs or alterations outside our facilities, criminal activity, improper installation, normal wear and tear, or to lack of maintenance.

We shall in no event be liable for death, injuries to persons or property, or for incidental, contingent, special or consequential damages arising from the use of our product. Some states do not allow the exclusion or limitation of incidental or consequential damages, so the above limitation of exclusion may not apply to you. THIS WARRANTY IS EXPRESSLY IN LIEU OF ALL OTHER WARRANTIES, EXPRESS OR IMPLIED, INCLUDING THE WARRANTIES OF MERCHANTABILITY AND FITNESS. This warranty gives you specific legal rights, and you may also have other rights, which vary from state to state.

Please contact us at customerservice@oem-tools.com or call us at 901-370-1101 for additional information or questions.

Thank you for your purchase.

CONTACT US

3580 E. Raines Road, Suite 3, Memphis, TN 38118
 Tel 1-866-458-2472
www.oem-tools.com