

Note:.....
.....
.....
.....
.....
.....
.....
.....
.....
.....
.....
.....
.....
.....
.....
.....
.....
.....
.....

24401

3/8" Dr. Reactionless Air Ratchet



OEM Limited One Year Warranty

For one (1) year from the date of purchase OEM tools will warranty this tool against defects in materials and workmanship. Defective OEM brand hand tools purchased from an authorized OEM distributor will be repaired or replaced when returned freight prepaid to the OEM Warranty Dept., 3580 E. Raines Rd. #3, Memphis, TN 38118. Proof of purchase with date of purchase will be required with all returns.

OEM will not be responsible for any consequential or incidental damages arising from the breach of this or any other warranty, whether expressed, implied or statutory.

Some states do not allow the exclusion or limitation of consequential or incidental damages, so the above exclusion may not apply to you. This warranty gives you specific legal rights, and you may also have other rights which vary from state to state.

**" SAFETY " PRESS AND TURN "
FORWARD & REVERSE DESIGN**

**OPERATING INSTRUCTIONS
SAFETY, INSTALLATION, USE & MAINTENANCE**

Warning: Always read operating manual before attempting to use this tool.



WARNING: This instruction manual contains important safety information. Always operate, inspect and maintain this tool in accordance with American National Standards Institute safety code of portable air tools (ANSI 3186.1) and any other applicable safety codes and regulations.

READ ALL INSTRUCTIONS. Do not attempt to operate the tool until you read and understand all safety precautions and manual instructions.

Never use oxygen or combustible gas as a power source for the tool. **EXPLOSION MAY OCCUR.**

Use dry, filtered, lubricated and regulated compressed air only.

Never use gasoline or other flammable liquids to clean the tool. Vapors in the tool will ignite by a spark and cause the tool to explode.

Do not exceed maximum permissible operating pressure 120 PSI (8 BAR).

Disconnect the tool from the air supply when: loading and unloading, clearing jams, performing service or maintenance and non-operation.

ALWAYS ASSUME THE TOOL IS LOADED!

Do not use the tool when changing one driving location to another, involves the use of stairs, ladders or scaffolding.

Do not carry the tool with your finger on the trigger.

Do not carry the tool by the hose to move the tool. Carry the tool only by the handle.

Wear eye protection with the shields

Wear eye protection where tools are being operated.

FREE FLIGHT FASTENERS OR DEBRIS WILL CAUSE PERMANENT EYE INJURY.

Wear hearing protection and hard hats.

Never point the tool at yourself or at any other person. Air under pressure can cause severe injury.

Never operate the tool while working above others.

DEATH OR SERIOUS INJURY MAY OCCUR.

Use pressure regulator, filter and oiler.

Use air supply hose rated for 150 PSIG minimum.

Do not use a check valve or any other fitting that allows air to remain in the tool.

Always turn off the air supply, drain hose of air pressure and detach tool from air supply before installing, removing or adjusting any accessory on this tool. Whip hoses can cause serious injury. Always check for damaged, frayed or loose hoses and fittings and replace immediately.

Operation



WARNING:

Protect your eyes and ears. Wear safety glasses with side shields. Wear hearing protection. Employers and users are responsible for ensuring the user or anyone near the tool wears this safety protection.

1. Check and replace any damaged or worn components on the tool. The safety warning labels on the tool must also be replaced if they are illegible.
2. Add a few drops of lubricant into the air inlet.
3. Install a quick connect fitting to the tool.
4. Connect the tool to an air compressor using a 3/8" I.D. hose. Make sure the tool is not loaded and the hose has a rated working pressure exceeding 200 PSI (13.8 BAR)
5. This ratchet wrench is rated at 3/8" USS bolt size. Rating must be downgraded for spring U bolts, long cap screws, double depth nuts, badly rusted conditions and spring fasteners as they absorb much of the impact power. When possible, clamp or wedge the bolt to prevent spring back. The forward/reversing button is used to change the rotation of the tool. When the button is set to the right, the tool will turn in a right hand rotation. When the button is set to the left, the tool will turn in a left hand rotation.
6. Regulate the air pressure to obtain 70 PSI (5 BAR) at the tool. Check the operation of the safety yoke mechanism.
7. Insert fasteners into your tool following the instructions of loading the tool.
8. Reconnect the air hose to the tool.
9. Test for proper fastener penetration by driving fasteners into a piece of wood. If the fasteners do not achieve the desired penetration, regulate the air pressure to a higher setting until the desired penetration is achieved. Do not exceed 120 PSI (8 BAR) at the tool.

Operation Instructions:



1. Thread the male plug onto the inlet bushing.
2. Add 2 or 3 drops of non-detergent oil into the plug before each use.
3. Connect to the air source with quick coupler.

WARNING:

- Do not carry tool by the hose. Protect the hose from sharp objects and heat.
- Keep away from rotating end of tool. Do not wear jewelry or loose clothing. Secure long hair. Scalping can occur if hair is not kept away from tool and accessories.
- Do not lubricate tools with flammable or volatile liquids such as kerosene, diesel or jet fuel.
- **Use only impact sockets and accessories on this tool. Do not use hand sockets and accessories.**
- Do not force tool beyond its rated capacity.
- Do not remove any labels. Replace any damaged labels.

Ratchet Wrench Specifications

Square Drive	3/8"
Air Consumption	2.52 CFM
Max. Torque	75 Ft/Lb (102 N/M)
Air Pressure	90 PSI (6.2 Bars)
Air Inlet	1/4" NPT
Free Speed	450 RPM
Ratchet Pawl	Single
Exhaust	Rear

MAINTENANCE AND CARE

Visual Inspection

- a) Smooth safety and trigger movement.
- b) All screws are tightened.
- c) Never use damaged or incomplete tool.

Cleaning

The periodical cleaning of the tool is recommended to ensure proper functioning.

- a) Disconnect the tool from air supply.
- b) Remove all fasteners
- c) Clear the magazine and nose sections with a blowgun to remove any accumulated debris.
- d) Check for free movement of the trigger, follower and work contact element. Remove any obstructions carefully.
- e) Oil tool daily with proper air tool oil.
- f) Empty the air tanks on your compressor daily to prevent moisture build-up in the air lines.

Lubrication

The tool should be lubricated daily.

- a) Add a few drops of non-detergent oil in the tool air inlet before each use.
- b) Never use detergent oils, which can damage o-rings causing the tool to malfunction.
- c) Wipe off excessive oil from the exhaust.

AIR SUPPLY

Tools of this class operate on a wide range of air pressures. It is recommended that air pressure of these tools measures 90 PSI at the tool while running free. Higher pressure (over 90 PSIG; 6.2 Bar) raises performance beyond the rated capacity of the tool, which will shorten tool life because of wear and could cause injury.

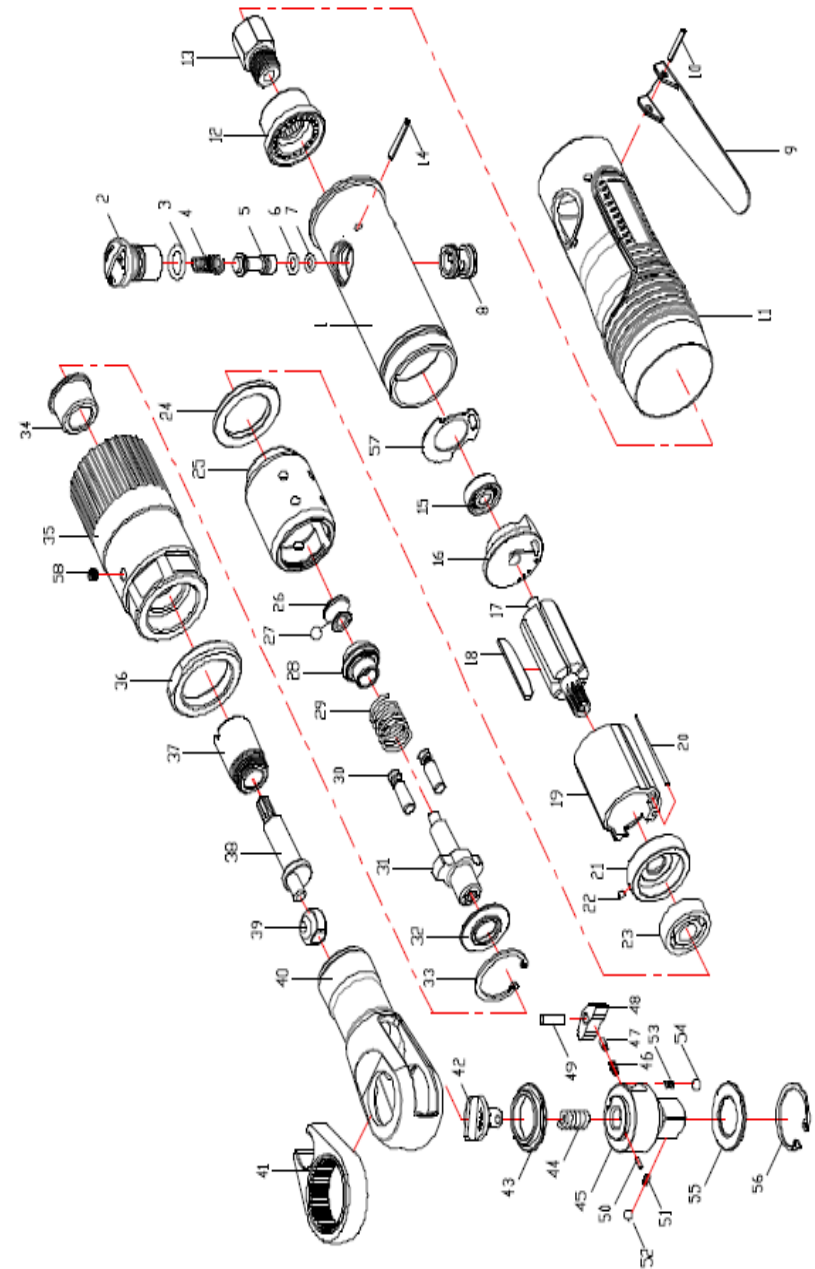
Always use clean, dry air. Dust, corrosive fumes and/or water in the air line will cause damage to the tool. Drain the air tank daily. Clean the air inlet filter screen on at least a weekly schedule.

The air inlet used for connecting air supply has standard 1/4" NPT. Line pressure should be increased to compensate for unusually long air hoses (over 25 feet). Minimum hose diameter should be 3/8" I.D. and fittings should have the same inside dimensions and be tightly secured.

**WARNING:**

Stop using the tool immediately if any of the following problems occurs. Serious personal injury could occur. Necessary repair or replacement must be carried out by qualified and trained technician of an authorized service location.

Problem	Possible Cause		Corrective Action
Tool runs slowly or will not operate.	1. Grit or gum in tool.		1. Flush the tool with air tool oil or gum solvent.
	2. No oil in tool.		2. Lubricate the tool according to the lubrication instructions
	3. Low air pressure.		3. A. Adjust the regulator on the tool to maximum setting. B. Adjust the compressor regulator to tool maximum of 90 PSIG
	4. Air hose leaks.		4. Tighten and seal hose fittings if leaks are found. Use sealing tape.
	5. Pressure drops.		5. A. Be sure the hose is the proper size. Long hoses or tools using large volumes of air may require a hose with an I.D. of 1/2 in. or larger depending on the total length of the hoses. B. Do not use a multiple number of hoses connected together with quick-connect fittings. This causes additional pressure drops and reduces the tool power. Directly connect the hoses together.
6. Worn rotor blade.		6. Replace rotor blade.	
7. Moisture blowing out of tool exhaust.		7. Water in tank: drain tank. (See air compressor manual). Oil tool and run until no water is evident. Oil tool again and run 1-2 seconds.	
Tool rotor turning w/t triggering	8. Air inlet o-ring broken.		8. Replace the broken O-ring.



NO.	PART NO.	DESCRIPTON	QTY
*1	24401-A	Housing	1
2	24401-B	Reverse Switch	1
3	24401-C	O-Ring	1
4	24401-D	Spring	1
5	24401-E	Valve Stem	1
6	24401-F	O-Ring	1
7	24401-G	O-Ring	1
8	24401-H	Bushing	1
9	24401-I	Throttle Lever	1
10	24401-J	Pin	1
11	24401-K	Handle Cover	1
12	24401-L	Muffler Cover	1
13	24401-M	Air Inlet	1
14	24401-N	Trigger Pin	1
15	24401-O	Bearing	1
16	24401-P	Rear Plate	1
17	24401-Q	Rotor	1
18	24401-R	Rotor Blade	6
19	24401-S	Cylinder	1
20	24401-T	Pin	1
21	24401-U	Front Plate	1
22	24401-V	Pin	1
23	24401-W	Bearing	1
24	24401-X	Washer	1
25	24401-Y	Hammer Cage	1
26	24401-Z	Cam Seat	1
27	24401-AA	Steel Ball	1
28	24401-AB	Drive Cam	1
29	24401-AC	Spring	1
30	24401-AD	Hammer Pin	2
31	24401-AE	Anvil	1

NO.	PART NO.	DESCRIPTON	QTY
32	24401-AF	Washer	1
33	24401-AG	Retainer Ring	1
34	24401-AH	Bushing	1
35	24401-AI	Connected Sets	1
36	24401-AJ	Nut	1
37	24401-AK	Bushing	1
38	24401-AL	Crank Shaft	1
39	24401-AM	Drive Bushing	1
40	24401-AN	Ratchet Housing	1
41	24401-AO	Ratchet Yoke	1
42	24401-AP	Reverse Switch	1
43	24401-AQ	Washer	1
44	24401-AR	Spring	1
45	24401-AS	3/8" Ratchet Anvil	1
46	24401-AT	Spring	1
47	24401-AU	Sleeve	1
48	24401-AV	Ratchet Pawl	1
49	24401-AW	Pin	1
50	24401-AX	Pin	1
51	24401-AY	Spring	1
52	24401-AZ	Steel Ball	1
53	24401-BA	Spring	2
54	24401-BB	Steel Ball	2
55	24401-BC	Washer	1
56	24401-BD	Retainer Ring	1
57	24401-BE	Gasket	1
58	24401-BF	Screw	1
NS-A	24401-BG	Name Plate	1
NS-B	24401-BH	Warning Label	1
NS-C	24401-BI	3/8" Ratchet Anvil Assy A	1