

Please read and save these instructions. Read through this owner's manual carefully before using product. Protect yourself and others by observing all safety information, warnings, and cautions. Failure to comply with instructions could result in personal injury and/or damage to product or property. Please retain instructions for future reference.



30 TON SUPER DUTY AIR/MANUAL SHOP PRESS

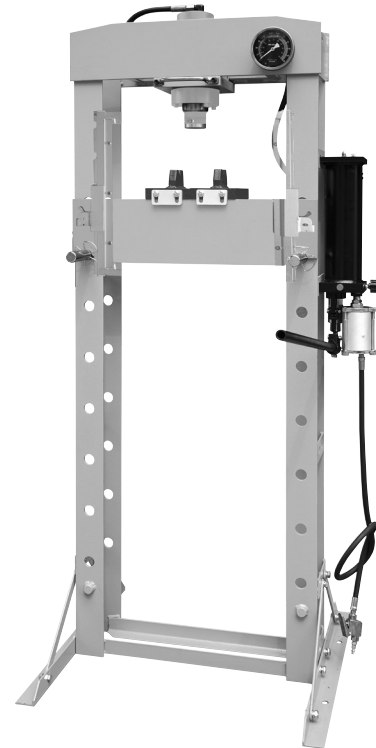
FOR CUSTOMER SERVICE

Technical Question?

CALL 1-866-458-2472
customerservice@oem-tools.com

UNPACKING

After unpacking the unit, inspect carefully for any damage that may have occurred during transit. Check for loose, missing, or damaged parts. If any damage is observed, a shipping damage claim must be filed with the carrier. DO NOT use the OEMTOOLS® 29001 30 Ton Super Duty Air/Manual Shop Press if broken, bent, cracked or damaged parts (including labels) are noted. Any Shop Press that appears damaged in any way, operates abnormally or is missing parts should be removed from service immediately. If you suspect that the Shop Press was subjected to shock load (a load that was dropped suddenly, unexpectedly, etc.) Immediately discontinue use until it has been checked by a factory authorized service center.



⚠ WARNING

The following safety information is provided as a guideline to help you operate your Shop Press under the safest possible conditions. Any tool or piece of equipment can be potentially dangerous to use when safety or safe handling instructions are not known or not followed. The following safety instructions are to provide the user with the information necessary for safe use and operation. Please read and retain these instructions for the continued safe use of your Shop Press. Failure to follow instructions listed below may result in serious injury. In addition, make sure that anyone who uses the equipment understands and follows these safety instructions as well.

Explanation of Safety Signal Words

⚠WARNING: Indicates a potentially hazardous situation which, if not avoided, could result in death or serious injury.

⚠CAUTION: Indicates a potentially hazardous situation which, if not avoided, may result in minor or moderate injury.

CAUTION: Used without the safety alert symbol indicates a potentially hazardous situation which, if not avoided, may result in property damage.

NOTES: Provide clarity and helpful information.

Thank you very much for choosing an OEMTOOLS® Product!

For future reference, please register your new tool at www.oem-tools.com and complete the owner's record below:

Model: _____ **Purchase Date:** _____

Save the receipt, warranty and these instructions. It is important that you read the entire manual to become familiar with this product before you begin using it. This product is designed for certain applications only. OEMTOOLS® cannot be responsible for issues arising from modification. We strongly recommend that this product is not modified and/or used for any application other than that for which it was designed. If you have any questions relative to a particular application, DO NOT use the product until you have first contacted customer service to determine if it can or should be performed on the product.

⚠WARNING: This product can expose you to chemicals which are known to the State of California to cause cancer and birth defects or other reproductive harm. For more information go to www.P65Warnings.ca.gov.



30 TON SUPER DUTY AIR/MANUAL SHOP PRESS

! IMPORTANT INSTRUCTIONS AND SAFETY RULES

1. Know your product. Read this manual carefully. Learn the product's applications and limitations, as well as potential hazards specific to it. The use of this product is simple and straightforward if you follow the instructions. When operating this product, use common sense and only use this product for its intended purpose.
2. Maintain labels and nameplates on this product. These carry important information. If unreadable or missing, contact OEMTOOLS® for a replacement.
3. Maintain this product with care. Keep it dry and clean – and free from brake fluid, oil, and grease (if applicable).
4. Check for damage. Check your product regularly. If part of the product is damaged, it should be carefully inspected to make sure that it can perform its intended function correctly. If in doubt, the part should be repaired. Refer all servicing to a qualified technician. Consult your dealer for advice.
5. Check for misalignment or binding of moving parts, breakage of parts, and any other condition that may affect the product's operation.
6. DO NOT use a damaged product. Tag damaged products "DO NOT USE" until repaired. If damaged, have the product serviced before using. Many accidents are caused by poorly maintained products.
7. Service must be performed only by qualified repair personnel. Service or maintenance performed by unqualified personnel could create a risk of injury.
8. When servicing a product, use only identical replacement parts. Use of unauthorized parts or failure to follow maintenance instructions could create a risk of injury.
9. Use only accessories that are recommended by the manufacturer for your model. Accessories that may be suitable for one product may become hazardous when used on another product.
10. Keep work area clean and well lit. Cluttered or dark work areas invite accidents.
11. Maintain a safe working environment. Keep the work area well lit. Make sure there is adequate surrounding workspace. Keep the work area free of obstructions, grease, oil, trash, and other debris. DO NOT use this product in a damp or wet location.
12. Keep children away from the work area. Never let a child handle this product without strict adult supervision.
13. Store this product out of the reach of children and untrained persons. This product may be dangerous in the hands of untrained users.
14. DO NOT operate this product if under the influence of alcohol or drugs. Read warning labels on prescriptions to determine if your judgment or reflexes are impaired while taking drugs. If there is any doubt, DO NOT attempt to operate.
15. Use safety equipment. Eye protection should be worn at all times when operating this product. Use ANSI approved safety glasses. Everyday eyeglasses are NOT safety glasses. Dust mask, non-skid safety shoes, hard hat or hearing protection should be used in appropriate conditions.
16. Wear proper apparel. Loose clothing, gloves, neck-ties, rings, bracelets or other jewelry may present a potential hazard when operating this product. Keep all apparel clear of the product.
17. DO NOT overreach. Keep proper footing and balance at all times when operating this product.
18. Keep away from flammables. DO NOT attempt to operate this product near flammable materials or combustibles. Failure to comply may cause serious injury or death.
19. Avoid accidental fire and/or explosion. DO NOT smoke near engine fuel and battery components.
20. We believe the information contained herein to be reliable. However, general technical information is given by us without charge and the user shall employ such information at their own discretion and risk. We assume no responsibility for results or damages incurred from the use of such information in whole or in part. Always refer to specific instructions and technical information supplied by vehicle manufacturer.
21. The manufacturer declines any and all responsibility for property damage or injury if said damage is the result of unskillful handling by the operator or of failure to observe the basic safety rules set forth in the instruction manual.
22. The warnings, precautions, and instructions discussed in this manual cannot cover all possible conditions and situations that may occur. The operator must understand that common sense and caution are factors which cannot be built into this product, but must be supplied by the operator.

PRODUCT DESCRIPTION

The OEMTOOLS® 29001 30 Ton Super Duty Air/Manual Shop Press is designed for repair shops where pressing, bending, straightening, forming and holding work requires high pressure hydraulics.

PRODUCT SPECIFICATIONS

Capacity:	30 Ton
Min. Work Height:	2-1/8"
Max. Work Height:	40-3/4"
Ram Stroke:	5-15/16"
Press Bed Width:	19-1/4"
Weight:	309 Lb.

SPECIFIC SAFETY INSTRUCTIONS AND WARNINGS

Thoroughly read and understand all instructions in this product manual before using this product. Failure to follow all instructions listed below may result in death, serious personal injury and/or property damage. Like most shop equipment, there is potential danger when operating this press. Accidents are often caused by lack of familiarity or failure to pay attention. Use this press with caution to decrease the risk of operator injury. If normal safety precautions are overlooked or ignored, serious personal injury may occur.



30 TON SUPER DUTY AIR/MANUAL SHOP PRESS

▲WARNING:

1. DO NOT use a damaged or malfunctioning press.
2. DO NOT exceed the rated capacity. Never apply excessive force to a workpiece and always use the pressure gauge to accurately determine the applied load. Exceeding rated press capacity can damage the press, shatter a workpiece, or launch a press pin (causing a severe impact injury). When the press has reached its maximum pressure or the pump lever becomes stiff to operate, the press has reached its limit. Never use a cheater pipe for extra leverage.
3. DO NOT stand directly in front of a loaded press and never leave loaded press unattended.
4. Applying pressure to parts with this press can cause them to spring out and strike you or bystanders with deadly force. Verify that bystanders are a safe distance away from the press when it is being operated.
5. When a part is pressed free, a workpiece may shift suddenly or fall from the press (possibly crushing a foot or leg). Use a catch basket and support long or awkward work pieces with stands or chains.
6. NEVER apply pressure to round objects, springs, or elastic items. Applying pressure to unstable objects can cause the object to eject, causing an impact injury.
7. Being hit by an ejected workpiece or press tooling can cause severe impact injury or death. When using the press, stand out of the way of any possible projectile path. Never press with rods or pins that are long enough to shift off-center and kick out under a load. Never stack rods and spacers to create an extended press pin. If pressing must occur with an extended press pin, the pin must be fastened with a safety chain or the press pin must be enclosed in a safety cage to eliminate a projectile hazard.
8. NEVER use this press to unload spring-loaded assemblies without also using the correct spring caging tool or jig.
9. NEVER attempt to re-align a workpiece while it is under pressure. Relieve hydraulic pressure, and start pressing operations over if a workpiece or press pin has moved or become misaligned. If a workpiece becomes misaligned during pressing operations, it may slip out of the press and cause a severe impact injury.
10. ALWAYS relieve hydraulic pressure if you suspect the workpiece is in a bind, or structural failure is imminent.
11. DO NOT work under the press when it is loaded.

CAUTION:

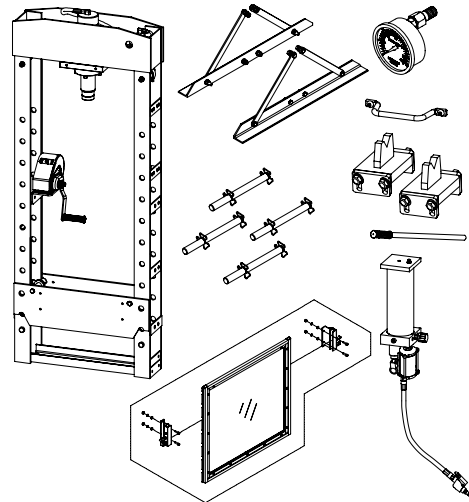
12. Some workpieces cannot withstand the force of pressing and can explode, causing impact injury. Other workpieces have hidden retaining rings, shoulders, pins, and/or welds, or are integral and cannot be pressed apart. Before using this press, make sure you understand how a component is built and pressed apart.
13. Use only on a hard, level and flat surface capable of bearing the combined weight of the Shop Press, the operator and any tools being used.

PERSONAL SAFETY

Always wear appropriate safety gear including heavy duty work gloves, ANSI approved safety goggles and steel toe boots during use.

UNPACKING

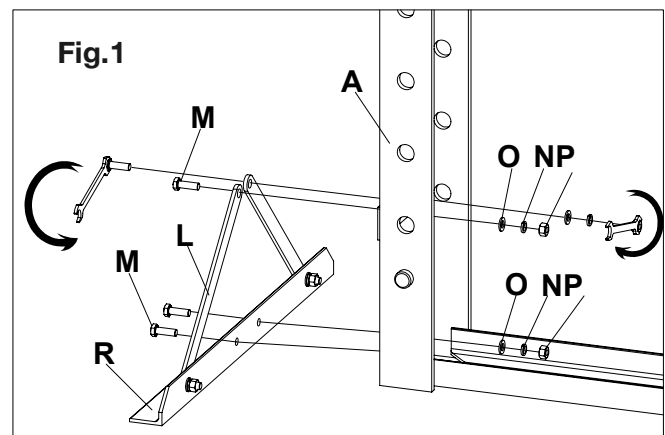
- To avoid any damage to this press or personal injury, remove the small parts packed in case first.
- Remove the polybag covering the press components and dispose of plastic bag responsibly.
- Use a forklift or crane to lift the press assembly out of the shipping case.
- Double check parts to ensure they are all there. The parts should include a press body frame, pump, base, support, hardware kits, etc.
- Parts included:



ASSEMBLY

▲WARNING: During assembly, the item must be fully supported to prevent tipping or instability. Ensure that it is securely stabilized at all times, particularly when positioned upright. A tip hazard exists if the item is not adequately supported, which may cause injury or damage.

1. Disassemble the hex bolt M10*30 (M), washer M10 (O), spring washer M10 (N) and hex nut M10 (P) from base (R). Then assemble the base (R) to the body frame (A) by the above parts. (Refer to Fig.1).
2. Disassemble the hex bolt M10*30 (M), washers M10 (O), spring washers M10 (N) and hex nuts M10 (P) from top of the support (L). Then assemble the 4 supports (L) to the body frame (A) by the above parts. (Refer to Fig.1).

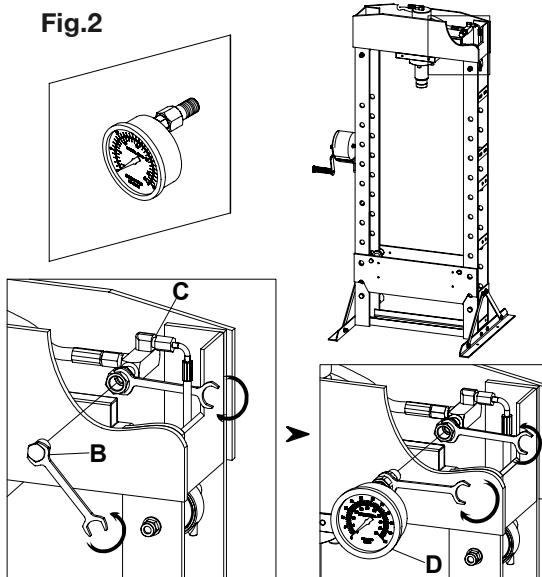




30 TON SUPER DUTY AIR/MANUAL SHOP PRESS

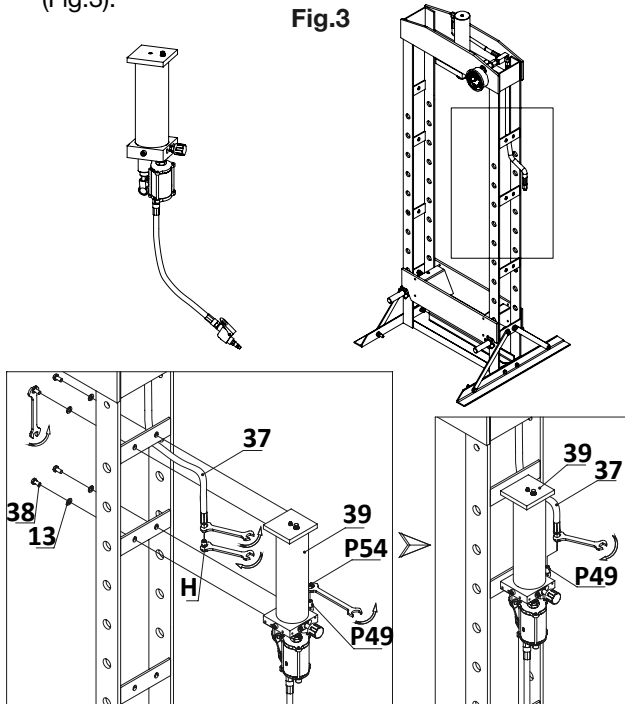
- Pressure Gauge Assembly: Remove the plug (B) that comes with the connecting fitting assembly (C). Attach and tighten nut at the front of the fitting assembly (C) to gauge fitting at the back of the pressure gauge (D) to fix the pressure gauge onto the upper beam. (Fig.2). Rotate the gauge so that the scale shown on the face of the gauge is level and the type is easily readable.

Fig.2



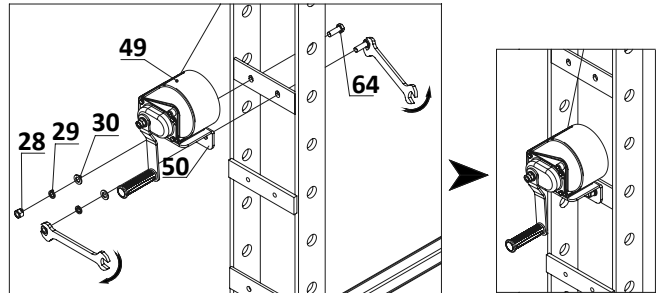
- Attach the pump assembly as shown with the air hose on the bottom (#39) to the right post using bolt (#38) and flat washer (#13). (Fig.3).
- Remove and discard the plug (#H) at the end of the oil hose (#37). Remove and discard the nut (#P54) at the top of the elbow (#P49) on pump assembly (#39). Attach the oil hose (#37) to elbow (#P49) and tighten it. (Fig.3).

Fig.3



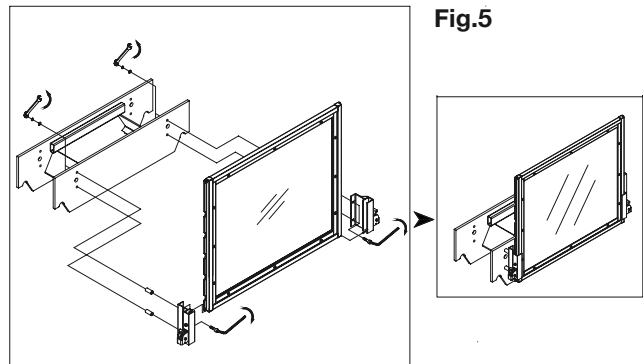
- Remove the hand winch (#49) from its shipping position to the outside of the post. Using the same hardware - bolt (#64), flat washer (#30), lock washer (#29), and nut (#28) to mount the winch to the outside frame using mounting bracket (#50). (Fig.4).

Fig.4



- Attach the protective guard brackets to the front of the press bed using bolts, washers, nuts and bushings. Slide the clear protective guard through the brackets and make sure it's automatically locked (Fig.5).

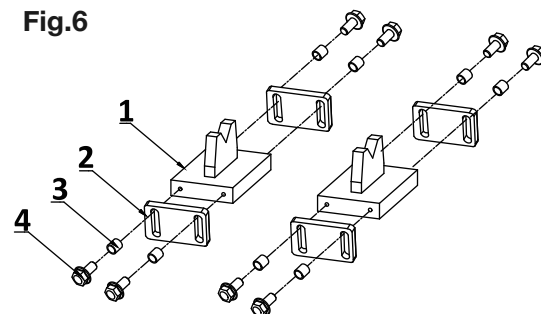
Fig.5



BEFORE USE

- Position ram piston so that it is centered to workpiece.
- Adjust the press bed to appropriate working height, then insert the pins (#7) to the holes of body frame and lock the circlips (#6).
- Depending on the working conditions, either side of the V block (#1) can face up. To prevent the V blocks from slipping off of the press bed, tighten the bolts (#4) on the two sides of the V block (#1). (Fig.6).

Fig.6



- Prior to each use, conduct a visual inspection checking for abnormal conditions such as cracked welds, leaks, and damaged, loose, or missing parts.



30 TON SUPER DUTY AIR/MANUAL SHOP PRESS

- Before the first use, ensure the base is secured to the floor using anchor bolts.
- Ensure the standing surface of the workshop press site is firm and horizontal, and that sufficient lighting is provided for safe operating procedures.
- Before operating the press, bleed the hydraulic system in order to eliminate any air that may have built up during transit. Open the release valve (#P41) by turning counter-clockwise. Pump the handle several full strokes and close the release valve. Should the system malfunction at any time, repeating this process may resolve the problem.

OPERATING INSTRUCTIONS

- Place the V block (#1) on press bed (#5), then insert workpiece onto the V block. **NOTE:** The V block (#1) must be used by pair, not by piece!
- Close the release valve (#P41) by turning it clockwise until it is firmly closed.
- Operate the pump slowly with the handle until the serrated saddle (#R7) is near the workpiece.
- Align workpiece and ram to ensure center loading.
- Then continue to press with handle to apply load onto workpiece (simultaneously check the pressure being applied shown on the pressure gauge).
- When work is done, stop pressing, slowly and carefully remove load from workpiece by slowly turning the release valve (#P41) counter-clockwise in small increments. (Total is 2 full turns).
- Once ram has fully retracted, remove workpiece from bed frame.

PRODUCT MAINTENANCE

- Use a clean and dry cloth to clean the press surfaces. Periodically grease the moving areas of the press as needed.
- When the press is not in use, fully retract the ram piston.
- If the press operating efficiency seems to be reduced, bleed the hydraulic system to remove any air that might be affecting press operation.
- Regularly check that the oil tank level is sufficient by pumping the pump handle tube to check if the ram piston can extend fully (5-15/16"). If the oil level is low, add good quality hydraulic oil to the oil tank as follows: remove the screw (#P52) on top of the reservoir inside pump (#P48), add good quality hydraulic oil then re-tighten the screw (#P52). After adding oil, perform air bleeding.
- It is recommended that an annual inspection be done by qualified technicians.

TROUBLESHOOTING

ISSUE	POSSIBLE CAUSES	SOLUTIONS
Ram will not press load	Release valve not tightly closed	Close release valve firmly
	Overload condition	Remedy overload condition
	Power unit malfunctioning	Replace the power unit
	Hydraulic oil level low	Add oil to proper level
Ram bleeds off after press operation	Air trapped in system	Bleed air from system
	Release valve not tightly closed	Close release valve firmly
Ram will not retract after unloading	Power unit malfunctioning	Replace the power unit
	Reservoir overfilled	Drain oil to proper level
Ram responding slowly	Pump linkage is stuck	Clean and lubricate moving parts
	Release valve not tightly closed	Close release valve firmly
	Power unit malfunctioning	Replace the power unit
Ram will not extend to full extension	Reservoir overfilled	Drain oil to proper level
	Air trapped in system	Bleed air from system
Ram will not extend to full extension	Hydraulic oil level low	Add oil to proper level
	Air trapped in system	Bleed air from system

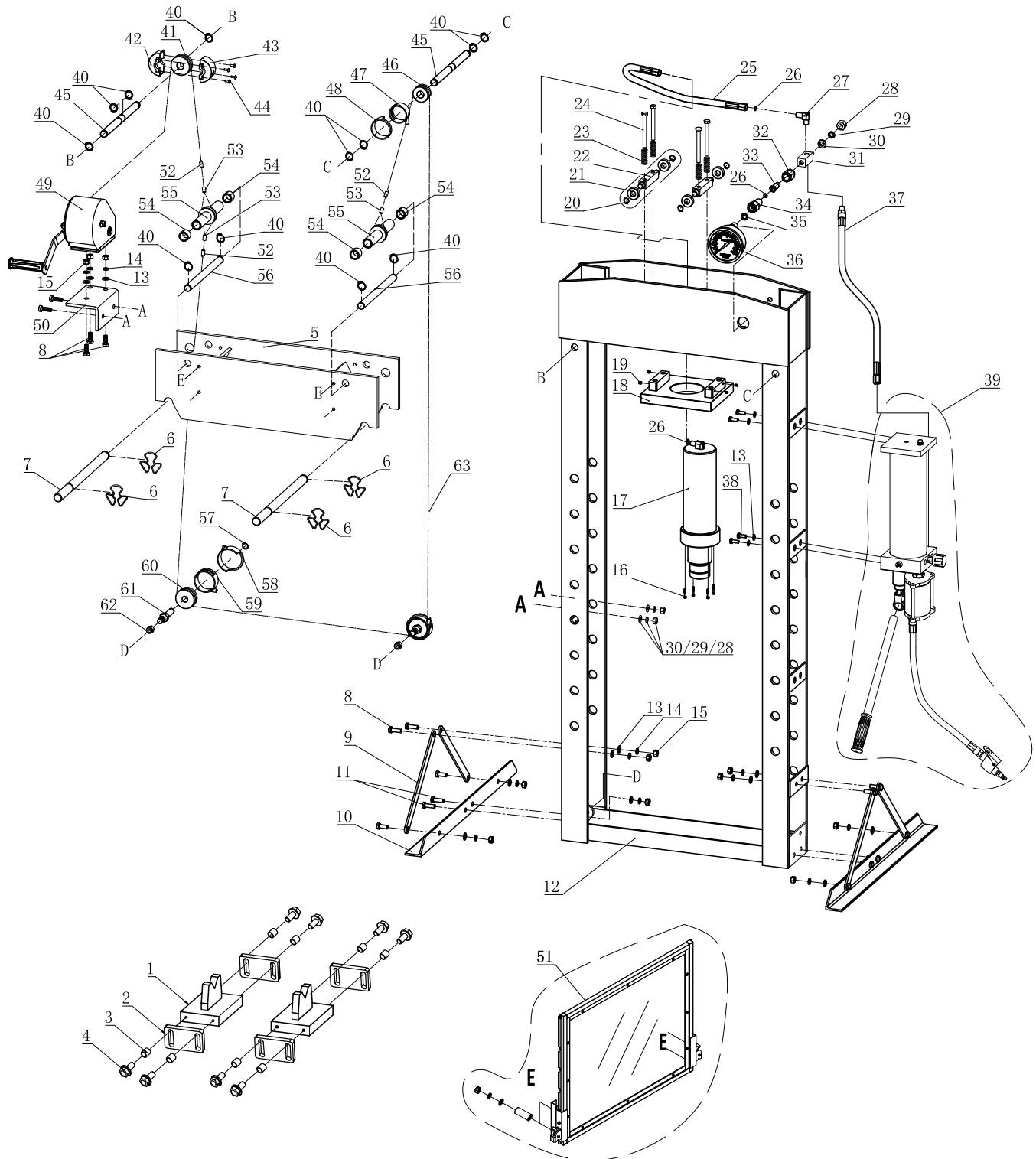
DISPOSAL

At the end of the useful life of the 30 Ton Super Duty Air/Manual Shop Press, dispose of the components according to all state, federal, and local regulations.



30 TON SUPER DUTY AIR/MANUAL SHOP PRESS

PRODUCT LAYOUT





30 TON SUPER DUTY AIR/MANUAL SHOP PRESS

PARTS LIST

Figure	Description	Qty.
1	V Block	2
2	V Block Retaining Plate	4
3	Bushing	8
4	Bolt	8
5	Press Bed	1
6	Circlip	4
7	Pin	2
8	Bolt	11
9	Support Bar	4
10	Base	2
11	Bolt	4
12	Frame	1
13	Flat Washer	19
14	Lock Washer	15
15	Nut	15
16	Screw	4
17	Cylinder	1
18	Cylinder Plate	1
19	Screw	4
20	Retainer Ring	4
21	Roller	4
22	Roller Axle	2
23	Spring	4
24	Bolt	4
25	Oil Hose	1
26	O-Ring	3
27	Elbow	1
28	Nut	3
29	Lock Washer	3
30	Flat Washer	3
31	Connector	1
32	Nut	1

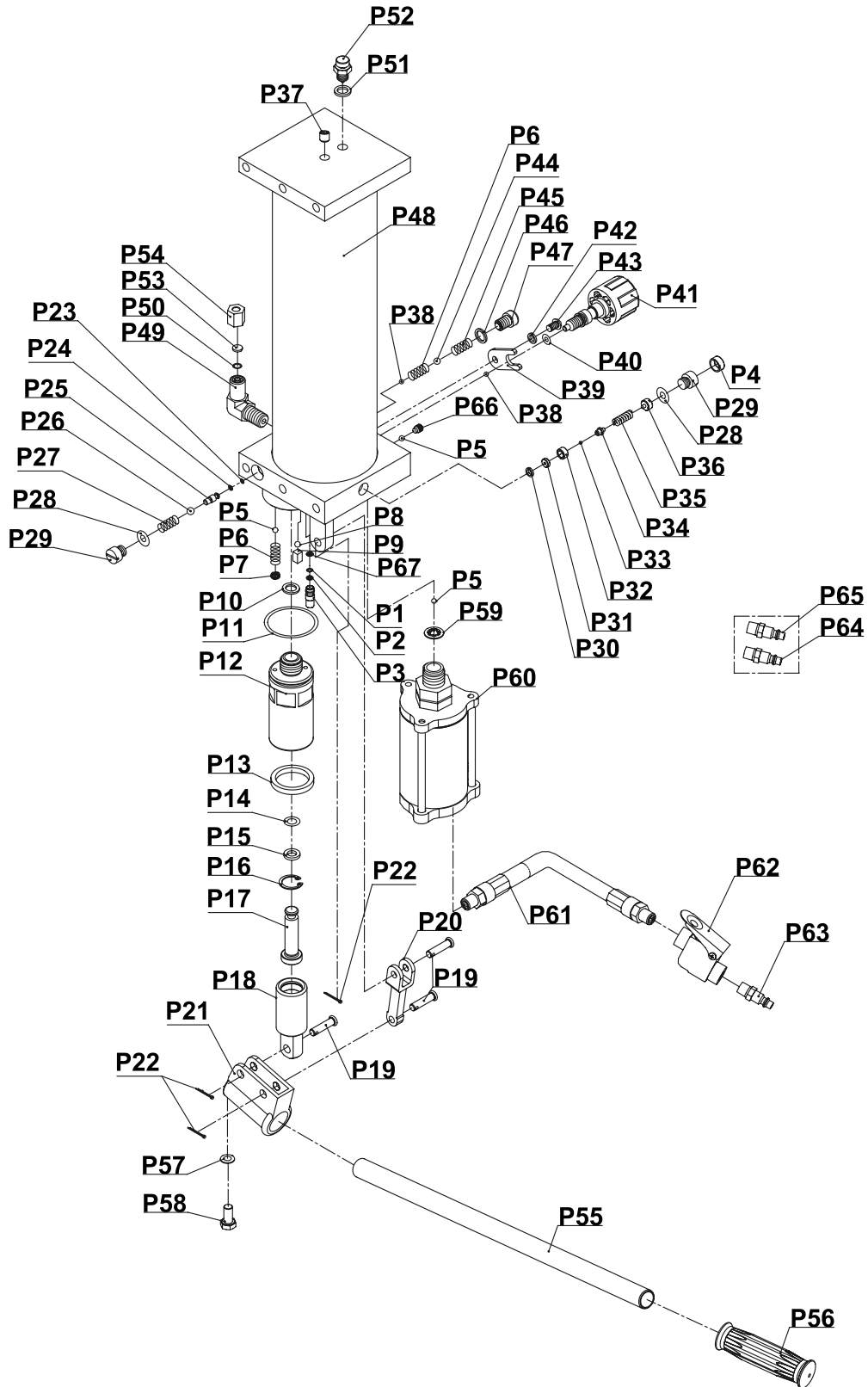
Figure	Description	Qty.
33	Screw	1
34	Gauge Fitting	1
35	Nylon Washer	1
36	Gauge	1
37	Oil Hose	1
38	Bolt	4
39	Pump Assembly	1
40	Retainer Ring	12
41	Roller	1
42	Cover	1
43	Cover	1
44	Screw	4
45	Pin	2
46	Roller	1
47	Pump Cover	1
48	Pump Cover	1
49	Hand Winch	1
50	Hand Winch Plate	1
51	Protective Guard	1
52	Cable Sleeve	3
53	Cable Joint	3
54	Tube	4
55	Bushing	2
56	Lifting Bar	2
57	Retainer Ring	2
58	Big Roller	2
59	Cover	2
60	Cover	2
61	Roller Bar	2
62	Nut	2
63	Cable	1

NOTE: Not all components are replacement items, but are illustrated as a convenient reference for location and position in the assembly sequence.



30 TON SUPER DUTY AIR/MANUAL SHOP PRESS

PRODUCT LAYOUT





30 TON SUPER DUTY AIR/MANUAL SHOP PRESS

PARTS LIST

Figure	Description	Qty.
P1	O-Ring	1
P2	PTFE Washer	1
P3	Delivery Valve	1
P4	Cap	1
P5	Steel Ball	3
P6	Spring	2
P7	Screw	1
P8	Steel Ball	1
P9	Ball Seat	1
P10	Copper Washer	1
P11	O-Ring	1
P12	Pump Core Seat	1
P13	U-Ring	1
P14	O-Ring	1
P15	Nylon Washer	1
P16	Clip	1
P17	Small Pump Core	1
P18	Big Pump Core	1
P19	Pin	3
P20	Connector Bar	1
P21	Handle Socket	1
P22	Pin	3
P23	O-Ring	1
P24	Nylon Washer	1
P25	Stem	1
P26	Steel Ball	1
P27	Spring	1
P28	O-Ring	2
P29	Screw	2
P30	Hold Down	1
P31	Washer	1
P32	Screw	1
P33	Valve Ball	1
P34	Steel Ball Seat	1

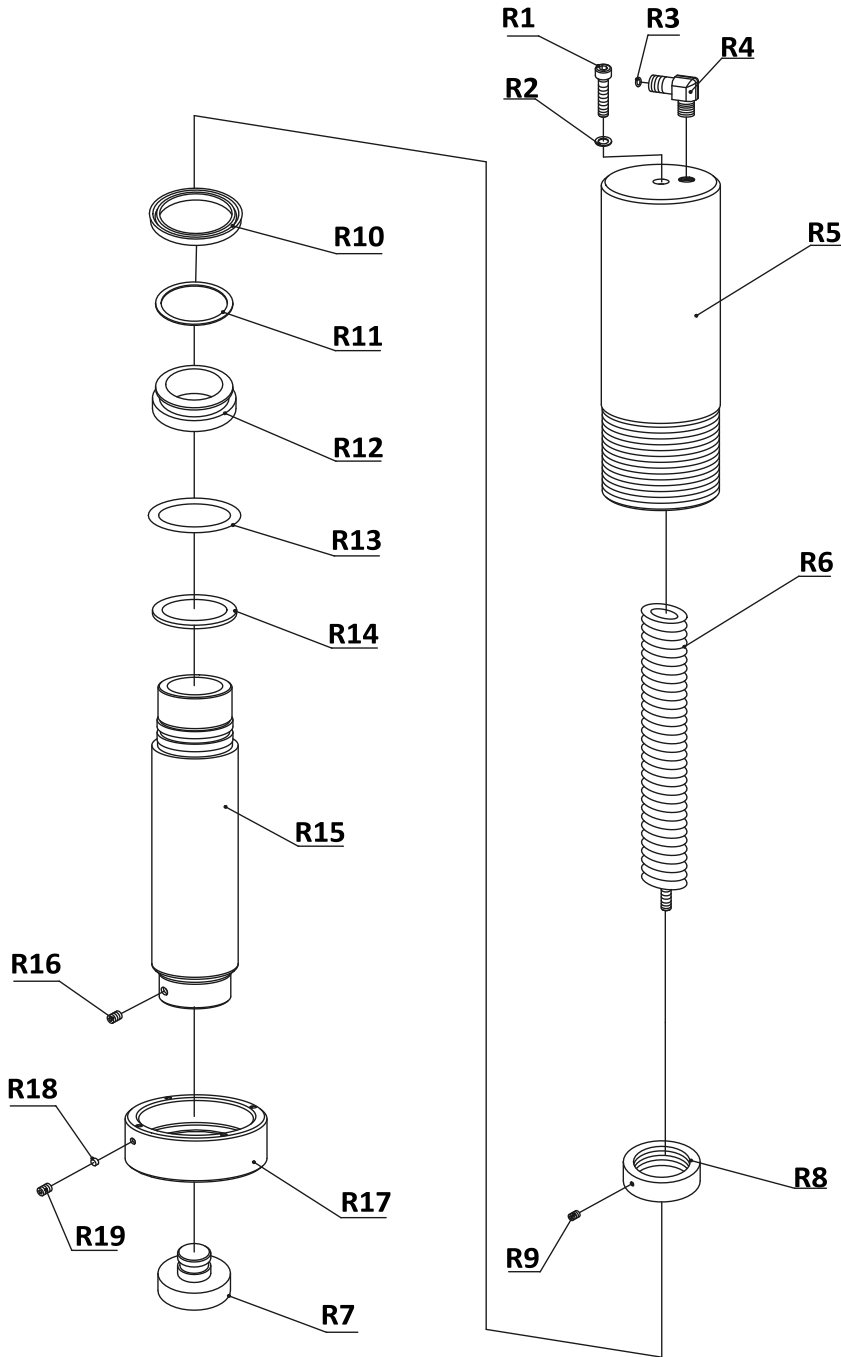
Figure	Description	Qty.
P35	Spring	1
P36	Screw	1
P37	Screw	1
P38	Steel Ball	2
P39	Valve Rod Limited	1
P40	O-Ring	1
P41	Release Valve	1
P42	Lock Washer	1
P43	Screw	1
P44	Steel Ball	1
P45	Spring	1
P46	Copper Washer	1
P47	Screw	1
P48	Pump	1
P49	Elbow	1
P50	O-Ring	1
P51	Nylon Washer	1
P52	Screw	1
P53	Nylon Washer	1
P54	Nut	1
P55	Handle	1
P56	Handle Cover	1
P57	Flat Washer	1
P58	Bolt	1
P59	Copper Washer	1
P60	Air Motor	1
P61	Air Hose	1
P62	Air Valve	1
P63	Air Hose Connector 1	1
P64	Air Hose Connector 2	1
P65	Air Hose Connector 3	1
P66	Screw	1
P67	Washer	1

NOTE: Not all components are replacement items, but are illustrated as a convenient reference for location and position in the assembly sequence.



30 TON SUPER DUTY AIR/MANUAL SHOP PRESS

PRODUCT LAYOUT



PARTS LIST

Figure	Description	Qty.
R1	Screw	1
R2	Copper Washer	1
R3	O-Ring	1
R4	Elbow	1
R5	Cylinder	1
R6	Spring	1
R7	Saddle	1
R8	Nut	1
R9	Screw	1
R10	U-Ring	1
R11	PTFE Washer	1
R12	Piston Top	1
R13	O-Ring	1
R14	PTFE Washer	1
R15	Piston	1
R16	Screw	1
R17	Bottom Split Cap	1
R18	Nylon Block	1
R19	Screw	1

NOTE: Not all components are replacement items, but are illustrated as a convenient reference for location and position in the assembly sequence.



30 TON SUPER DUTY AIR/MANUAL SHOP PRESS

WE STAND BEHIND OUR TOOLS. OEMTOOLS® 90 DAY WARRANTY

If within 90 days from the date of purchase of this OEMTOOLS product, you find any defect in material or workmanship, through normal usage, return it to the place of purchase or to OEMTOOLS® for repair or replacement at our discretion. In order to obtain this service, send your tool and proof of purchase (transportation pre-paid) to:

OEMTOOLS® Q.A. Dept., 3580 E. Raines Road #3, Memphis, TN 38118.

We will not be responsible for lost or damaged goods during transportation; please insure your package. If our inspection verifies the defect, we will repair or replace the product, or we may elect to refund the purchase price if we cannot readily and quickly provide you with a replacement. We will return repaired products at our expense, but if we determine there is no defect, or that the defect resulted from causes not within the scope of our warranty, then you must bear the cost of returning the product.

OEMTOOLS® does not provide warranty for products labeled other than OEM® or OEMTOOLS®. OEMTOOLS® will not provide any warranty for products subjected to abnormal use. Abnormal use includes (but is not limited to) abuse, accident, alteration, neglect, and unauthorized or unreasonable use or repairs. This warranty does not cover bits, blades, files, batteries, or calibration. We recommend that you maintain your tools and sharpen or replace blades, bits, files, and batteries as necessary. OEMTOOLS® reserves the right to make any changes in construction or design at any time without any obligation in incorporating such changes to tools or equipment previously sold.

OEMTOOLS® makes every effort to ensure that its products meet high quality and durability standards, and warrants to the original purchaser that this product is free from defects in materials and workmanship. This warranty does not apply to damage due directly or indirectly to misuse, abuse, negligence or accidents, repairs or alterations outside our facilities, criminal activity, improper installation, normal wear and tear, or to lack of maintenance.

OEMTOOLS® is not responsible for damaged shipments or shortages resulting from carrier mishandling. Notify your carrier's office immediately to file a claim. Keep damaged goods and containers for inspection until advised by the carrier as to disposal.

We shall in no event be liable for death, injuries to persons or property, or for incidental, contingent, special or consequential damages arising from the use of our product. Some states do not allow the exclusion or limitation of incidental or consequential damages, so the above limitation of exclusion may not apply to you. THIS WARRANTY IS EXPRESSLY IN LIEU OF ALL OTHER WARRANTIES, EXPRESS OR IMPLIED, INCLUDING THE WARRANTIES OF MERCHANTABILITY AND FITNESS. This warranty gives you specific legal rights, and you may also have other rights, which vary from state to state.

Please contact us at customerservice@oem-tools.com or call us at 901-370-1101 for additional information or questions.

Thank you for your purchase.

CONTACT US

3580 E. Raines Road, Suite 3, Memphis, TN 38118
Tel: 1-866-458-2472
www.oem-tools.com