



GreatNeck®

14.4V CORDLESS IMPACT WRENCH



PART# 80170

INSTRUCTION MANUAL

© 2013 ALL RIGHTS RESERVED BY GREAT NECK SAW MANUFACTURERS, INC.

WARRANTY INFORMATION

PROOF OF PURCHASE

Please keep your dated proof of purchase for warranty and servicing purposes.

ONE YEAR LIMITED WARRANTY

For one year from the date of purchase of this GreatNeck® product you find any defect in material or workmanship, through normal usage, either return it to the place of purchase, or send it to GreatNeck® Tools LLC. for repair or replacement at our discretion. In order to obtain this service send your tool and proof of purchase, transportation pre-paid, to GreatNeck® Tools LLC Q.A. Dept, 3580 E. Raines Rd. #3, Memphis, TN 38118. This warranty gives you specific legal rights, and you may also have other rights, which vary from state to state.

This product is not guaranteed if used for industrial or commercial purposes.

TOOL FREE HELPLINE: 1-866-458-2472

GENERAL & SPECIFIC SAFETY INSTRUCTIONS

1. KNOW YOUR TOOL.

Read and understand the owners manual and labels affixed to the tool. Learn its application and limitations as well as its specific potential hazards.

2. **Don't use power tools** in damp or wet locations or expose them to rain. Keep work area well lit and provide adequate surrounding work space.

3. USE RIGHT TOOL.

Don't force the tool or the attachment to do a job for which it was not designed.

4. MAINTAIN TOOL WITH CARE.

Keep tool clean for best and safest performance. Follow instructions for operation and changing accessories.

5. USE RECOMMENDED ACCESSORIES.

Only use recommended accessories. Follow the instructions that accompany the accessories. The use of improper accessories may cause hazards.

6. CHECK FOR DAMAGED PARTS.

Before further use of the tool, parts that are damaged should be carefully checked to ensure they will operate properly and perform their intended function. Check for alignment of moving parts, breakage of parts, mounting, and any other conditions that may affect its operation. Parts which are damaged should be properly repaired or replaced.

7. USE PROPER SPEED.

A tool will do a better and safer job when operated at the proper speed.

8. WEAR PROPER APPAREL.

Do not wear loose clothing, gloves, neckties or jewelry (rings, watch) because they could get caught in moving parts. Non-slip footwear is recommended. Wear protective hair covering to contain long hair. Roll up long sleeves above the elbows.

9. ALWAYS WEAR SAFETY GLASSES.

Always wear safety glasses (ANSI Z87.1). Everyday eyeglasses only have impact resistant lenses, they are **NOT** safety glasses. Also use a face or dust mask if operation is dusty.

10. **Do not use tool** if trigger does not turn it on or off. A tool which can not be controlled with the trigger is a potentially dangerous tool and must be repaired.

GENERAL & SPECIFIC SAFETY INSTRUCTIONS

Safety instructions for GreatNeck 14.4V battery and charger

1. Never attempt to open the charger for any reason or attempt to charge a battery which is not designed for use with this charger.
 2. Do not store in locations where the temperature may exceed 104°(F).
 3. Charge only at ambient temperatures between 40°and 104°(F).
 4. Charge only using the charger provided with the tool.
 5. Under extreme conditions, battery leakage may occur. When you notice liquid on the battery, proceed as follows:
 - Carefully wipe the liquid off using a cloth. Avoid skin contact.
- In case of skin or eye contact, follow the instructions below:
In case of skin contact, immediately rinse with water. Neutralise with a mild acid such as lemon juice or vinegar. In case of eye contact, rinse abundantly with clean water for at least 10 minutes. Consult a physician.
6. Disconnect the battery pack from the tool or place the forward/reverse switch in the center lock position before making any adjustments, changing accessories, or storing the tool.
 7. Be careful not to drop, shake or strike the battery.

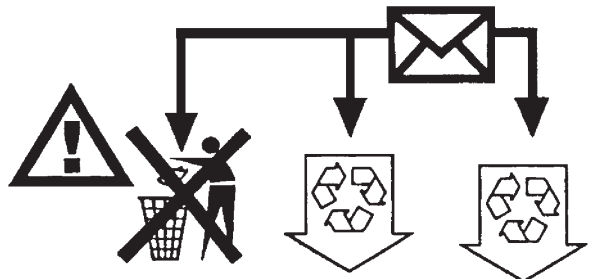
Fire hazard! Do not short the battery. Do not touch the terminals with any conductive material. Do not store battery in a container with other metal objects such as nails, screws, coins. The charger must be used in a well ventilated area.

Important: This charger is intended for indoor use only.

1. Only use the supplied charger to charge the batteries.
2. Never attempt to charge non-rechargeable batteries.
3. Have defective charger power cord replaced immediately.
4. Do not expose charger to rain or snow.
5. Do not open the charger.
6. Do not allow anything to cover or clog the charger vents.

Protecting the Environment- Be responsible

Should you find one day that your tool needs replacement, or if it is of no further use to you, think of the protection of the environment. If you want to dispose of the tool yourself, the batteries must be removed and disposed of in accordance with local regulations. Take the batteries to your service agent or a local recycling station. Collected batteries will be recycled or disposed of properly.



GETTING TO KNOW YOUR CORDLESS IMPACT WRENCH

Specifications

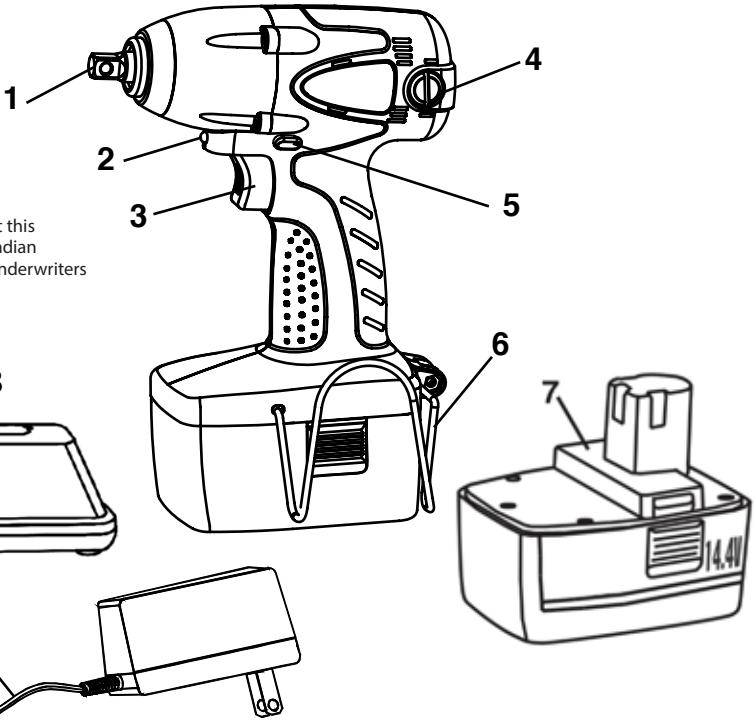
Part #	80170
Voltage	14.4V
Drive size	3/8"
No load speed	0-2400 RPM
Impacts per minute	0-3000 IPM
Torque	900 in/lbs./80ft. lbs.
Battery type	1.7Ah Ni-Cd
Charger Input	120V/60Hz
Charge time	6-8 hrs.



Intertek
3042597
JD5057



This symbol designates that this tool is listed with both Canadian and U.S. requirements by Underwriters Laboratories.



- | | |
|---|---|
| 1) 3/8" Drive | 7) Rechargeable 14.4V, 1.7Ah battery (#80147) |
| 2) LED light | 8) 14.4V Battery charger (#80170-1) |
| 3) Variable speed trigger | 9) Charger Red light, battery is charging |
| 4) Carbon brush cover (1 of 2) | 10) Charger green light, battery is fully charged |
| 5) Forward/reverse switch w/lock position | 11) Adapter |
| 6) 2 Position belt clip | |

CHARGING AND INSTALLING BATTERY

IMPORTANT STEPS BEFORE USE

If you are using the cordless impact wrench for the first time, the batteries must first be charged. A new battery, or one which has not been used for an extended period of time, achieves full performance only after 5 charges and discharges of the battery. A substantial drop in operating period per charge indicates that the battery is worn out and must be replaced.

BATTERY CHARGER

- Always inspect the battery charger, cord and plug before each use.
- Protect battery charger from humidity and only operate in dry areas.
- Do not disassemble charger or operate the charger if it has received a sharp blow, has been dropped or damaged in any way. Replace damaged charger immediately. Do not use damaged battery or charger.

CHARGING BATTERY

Start the charging procedure by plugging the charger to a power source and inserting the battery into the charger slot. The battery and the charger become warm during the charging process. This is normal and expected. To prevent incorrect battery insertion in the charger, insert the battery according to the position of the key in the charger.

The red light on the charger indicates that the battery is charging and the green light indicates that the battery is fully charged. After charging is complete, disconnect the charger from its power source and then remove the battery

INSTALLING/REMOVING BATTERY

To install a battery into the base of the impact wrench, simply slide the battery into the base of the impact wrench and push it all the way until the battery clips snap the battery into place.

To remove the battery from the base of the impact wrench, simultaneously press the battery clips (A) Fig.1 on both sides of the battery and pull the battery out.



Figure 1

IMPACT WRENCH OPERATION

VARIABLE SPEED TRIGGER

Your cordless impact wrench is equipped with a variable speed trigger switch (A) Fig.2. The speed can be controlled from the minimum to the maximum RPM just by the pressure applied to the trigger switch. Apply more pressure to increase speed and apply less pressure to decrease speed.

FORWARD / REVERSE AND TRIGGER LOCK

Your cordless impact wrench is equipped with a Forward / Reverse lever and a trigger lock (B) Fig.2. It is located above the trigger. This lever is designed to change the rotation direction of the wrench and locking the trigger to help prevent accidental starts and battery discharge. For a forward rotation (with the 3/8" drive pointing away from you) move the lever to the left. For reverse rotation move the lever to the right. To lock the trigger, place the lever in the center position.

WARNING! Do not change the rotation direction until the impact wrench has come to a complete stop.

Changing the rotation during operation can cause damage to the tool.

LED LIGHT

Your cordless impact wrench features a LED light system (C) Fig.2 which gets activated by pressing the trigger. This feature is ideal when working in partially lit work environments.

ELECTRIC BRAKE

This impact wrench is equipped with an electric brake. If the tool consistently fails to stop quickly after the trigger is released, have the tool serviced.

IMPACT ACTION

When this impact wrench reaches a certain torque, the impact function is engaged and a clicking sound will be heard, this is normal.



Figure 2

OPERATION AND MAINTENANCE

2 POSITION BELT CLIP

This impact wrench comes with a 2 position belt clip which allows you clip the impact wrench upside down on your belt. The belt clip can be installed on either the right or left side of the impact driver base. To install the belt clip;

- 1) Remove the battery from the impact wrench base.
- 2) Remove the clip retainer plate (D) Fig.4 by undoing the 2 flat head screws (E).
- 3) Insert the belt clip (A) all the way into hole (B).
- 4) Pivot the belt clip and position the tip (C) as shown, place the clip retainer plate over the tip and secure plate into place with the same 2 flat head screws removed previously.

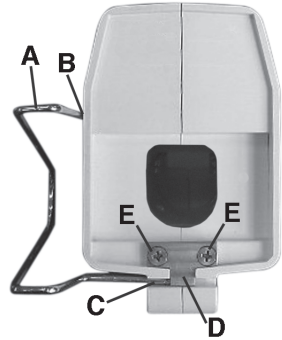


Figure 4

MAINTENANCE

WARNING: THERE ARE NO USER SERVICEABLE PARTS INSIDE

Preventative maintenance performed by unauthorized personnel may result in the misplacement of internal wires and components which could cause serious hazards. We recommend that all servicing be performed by a qualified GreatNeck service center technician.



Figure 5

REPLACING CARBON BRUSHES

Remove and check the carbon brushes regularly. They can be accessed by removing the brush caps (A) Fig.5 using a screwdriver. Both carbon brushes must be replaced once one wears down to the limit line on the carbon block. Only use identical replacement carbon brushes.

BATTERIES

If you notice a decrease in battery performance or a significant difference in running power between charges, then it is time to replace the battery. Failure to do so may damage the charger and cause improper operation.

Batteries last longer and recharge better when they are stored discharged.

Fully recharge the battery before using after prolonged storage.

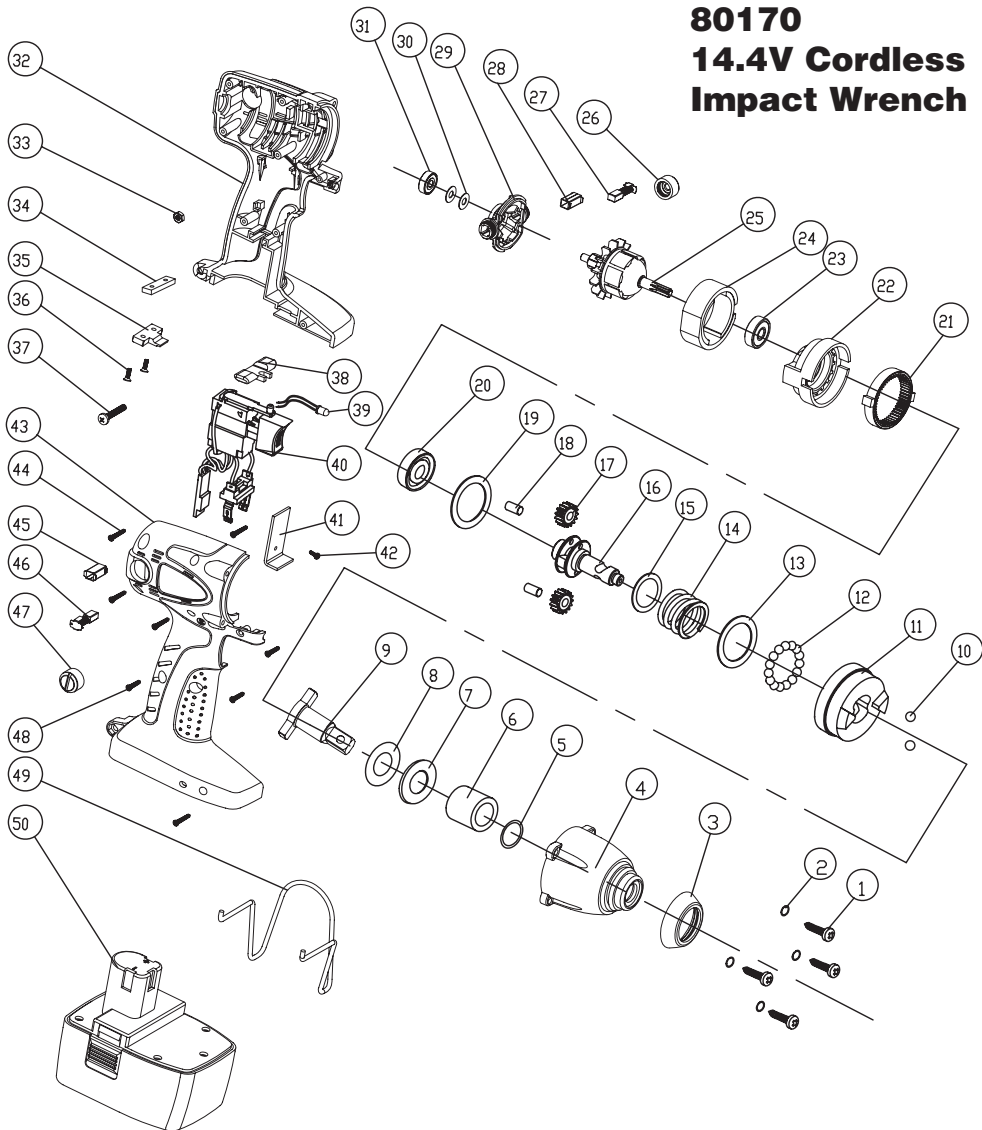
CLEANING

To avoid accidents, always remove the battery before cleaning. The tool is most effectively cleaned with the use of an air compressor. Always wear safety glasses when using an air compressor. Ventilation openings and switch levers must be kept clean and free of foreign objects. Do not insert pointed objects through these openings in the attempt to clean them.

CAUTION: Some cleaning products and solvents can damage the plastic parts of your tool, such as gasoline, chlorinated cleaning agents, ammonia and household detergents that contain ammonia.

EXPLOSION DIAGRAM

80170 14.4V Cordless Impact Wrench



Note: Charger not shown.
Replacement Charger #80170-1

PARTS LIST

No.	Code	Description	Qty.	No.	Code	Description	Qty.
1	500200	Selftapping ScrewST3.9X19	4	36	241566	Screw M3X10	2
2	504003	Spring Washer ø4	4	37	500816	Screw M4X25	1
3	322304	Rubber Sheath	1	38	311651	Direction Setting Button	1
4	234027	Aluminium Armet	1	39	161509	LED Light	1
5	320003	Washer	1	40	163621	Switch Ass	1
6	205511	Shaft coat	1	41	224445	Radiator	1
7	320005	Washer	1	42	500827	Selftapping ScrewM3X4	1
8	221225	Washer	1	43	306091	Housing II	1
9		Shaft	1	44	500002	Selftapping ScrewST3X20	5
10	516005	Ballø5.5	2	45	314522	Brush Case	1
11	215503	Torque Through	1	46	162422	Carbon Brush	1
12	516000	Ballø3	27	47	314520	Carbon Cap	1
13	221224	Washer	1	48	500001	Selftapping ScrewST3X16	3
14	241517	Spring	1	49	242550	Pothook	1
15	221223	Washer	1	50	80147	Battery	1
16	213704	Shaft	1	51	80170-1	Charger (not shown)	1
17	200012	Gear	2	52			
18	514011	Pin	2	53			
19	221222	Washer	1	54			
20	520037	Bearing	1	55			
21	201305	Inner Gear Ring	1	56			
22	316802	Gear Box	1	57			
23	520013	Bearing(627)	1	58			
24	138006	Stator Core	1	59			
25	134006	Rotor Assembly	1	60			
26	314520	Carbon Cap	1	61			
27	162422	Carbon Brush	1	62			
28	314522	Brush Case	1	63			
29	222822	Brush Holder	1	64			
30	306091	Housing I	1	65			
31	520003	Bearing(625)	1	66			
32	342203	Commutator Washer	1	67			
33	502001	Utter Hexagon nut M4X3	1	68			
34	203070	Clamp Plate	1	69			
35	224501	Fixing Plate	1	70			